



# SYBERTECH

*Waste Reduction Ltd.*



## Product & Services Catalog

Toll Free Phone: 1-888-888-7975

| [sales@swrl.com](mailto:sales@swrl.com)

| [www.swrl.com](http://www.swrl.com)

# Working Together for Cleaner & Safer Environment

Sybertech was incorporated in Vancouver, BC and has been in business for over 30 years. We started out in the [hazardous waste](#) industry; removing and recycling hazardous waste from a large number of hospitals, school districts, cities/towns and industrial clients. Over the years, we have grown and expanded our product lines while always keeping in mind our goals - to promote products designed to reduce operational costs while reducing worker injuries and to contribute to a cleaner and safer environment.

Every year, our sales team travels throughout North America, attending trade shows & conventions and meeting with potential clients to discuss how we can add our Sybertech products to their plans - whether that be a new park & trail system, a street rejuvenation project or a community garden initiative.

Our [In-Ground Trash Cans](#) are the perfect solution to a number of trash-related issues and greatly reduce operational costs due to less frequent pick-ups required. We also sell [BigMax Cranes](#) to service our in-ground trash cans, which help to reduce possible staff injuries.

Check out our [Self-Watering Reservoir Planters page](#) to see how our planters are being used in bike lane projects, crosswalk applications and school gardening programs. These planters are a great way to gain back valuable staff hours due to less frequent watering times required. The large water reservoir in many of our models encourages deep root growth which results in vibrant and healthy flowers/plants.

Another great product that we offer is our [Dog House Stations and Waste Bags](#). When used in combination with our [Millennium Series Trash Systems](#), this innovative product line will help to keep parks and community spaces healthy and clean while remaining environmentally friendly.

We are also the Canadian Rep for Aircycle / Terracycle and the new [Bulb Eater® 3 & the Bulb Eater® 3L with Intelli Technology](#), which is a fluorescent tube crushing machine. This machine safely crushes the tubes and removes the mercury vapour, drastically cutting the costs of dealing with these fluorescent lights. We also provide a complete service of recycling the waste generated from the Bulb-eater. [Contact us](#) today to learn more.

Sybertech is committed to bringing new and innovative technologies to the public and government to reduce expensive operational cost and provide a cleaner, safer environment.



**Sybertech Waste Reduction Ltd.**  
PO Box 3009 - 33191 First Ave.,  
Mission, British Columbia, Canada  
V2V 1G0



---

## Contents

Introduction	<b>2</b>
Contents	<b>3-4</b>
Millennium Series In-Ground Trash Cans & Recycling Containers	<b>5</b>
How They Work	<b>6</b>
Why Choose the In-Ground Trash Can System?	<b>7</b>
Available Colors & Stone Finish Options	<b>8</b>
4000 Model—Bear Resistant	<b>9</b>
3000 Model	<b>10</b>
2000 Model / 1000 Model	<b>11</b>
500 Model—Above Ground Trash Cans & Recycling Containers	<b>12</b>
Lid & Access Opening Options	<b>13</b>
Skirting Options	<b>14</b>
Other Options	<b>15</b>
Locking Systems Available	<b>16</b>
Replacement Bags & Lifting Platform Assembly	<b>17</b>
Multi-Can Placement and Blank Lid Use	<b>18</b>
Cranes for Servicing	<b>19</b>
Maxilift Cranes	<b>20</b>

---

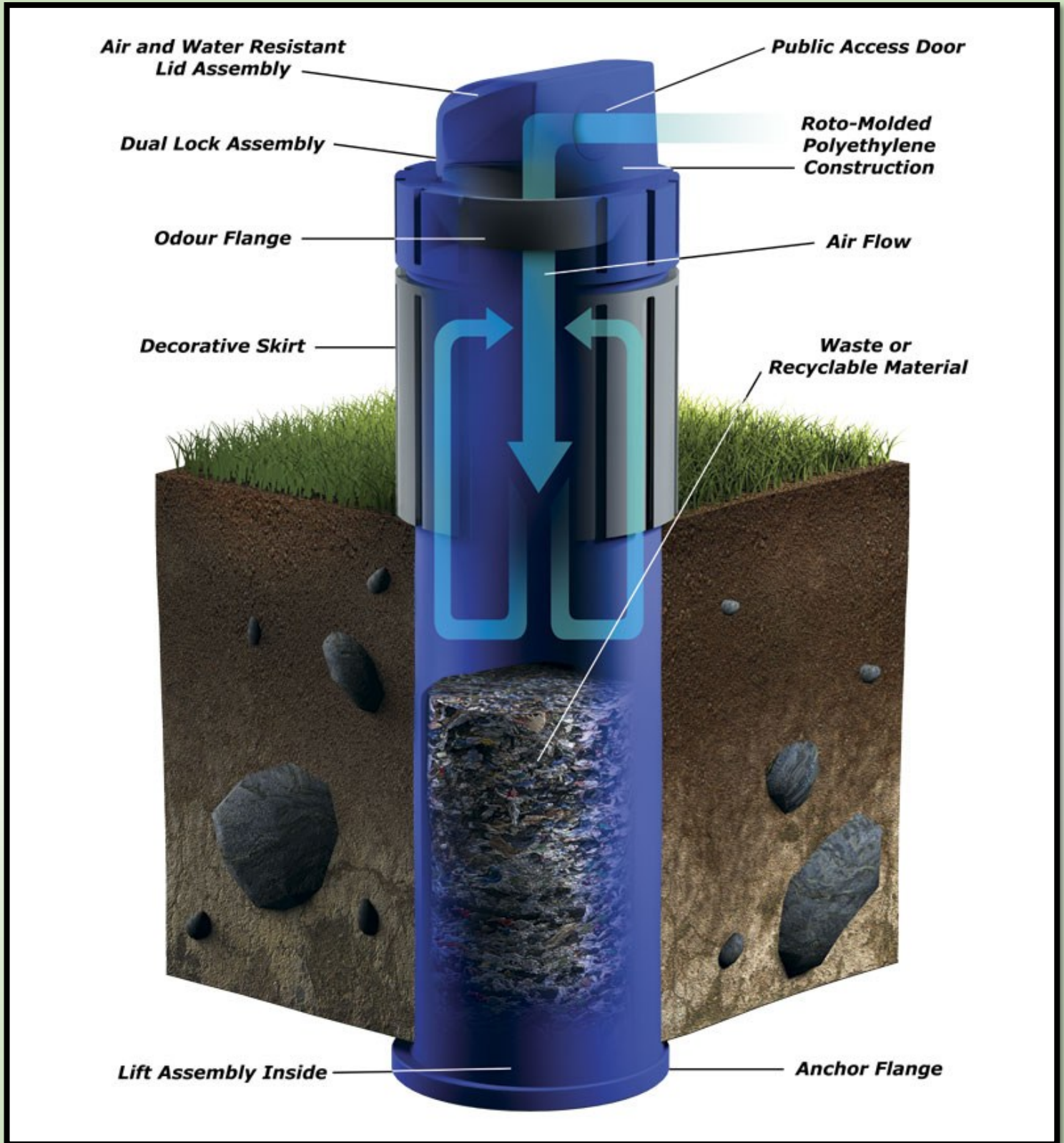
## Contents—Continued

Millennium Series Self-Watering Reservoir Planters	<b>21</b>
How They Work & Why Choose Self-Watering Reservoir Planters?	<b>22</b>
Available Designs and Sizes	<b>23</b>
Available Colors & Stone Finish Options	<b>24</b>
Soil & Water Capacities	<b>25</b>
Protected Bike Lanes & Crosswalk Applications	<b>26</b>
Outdoor Patio Spaces & School/Community Gardens	<b>27</b>
Streetscape Beautification Projects & Residential Use	<b>28</b>
Planter Specification Sheets	<b>29-35</b>
Dog House Stations & Waste Bags	<b>36</b>
Dog House Stations	<b>37</b>
Waste Bags	<b>38</b>
Get-a-Grips Stainless Steel Stair Treads	<b>39</b>
EZ Reacher Pick-Up Tools	<b>40</b>
Bulb Eater 3	<b>41-42</b>
Bulb Eater 3L	<b>43-44</b>
Hazardous Waste Removal Services	<b>45</b>
Hazardous Waste Removal Services information	<b>46</b>
Thank you from SWRL	<b>47</b>



**Millennium Series  
In-Ground Trash Cans & Recycling Containers**

# How They Work



The **Millennium Series In-Ground Trash Can & Recycling Container system** consists of an impermeable cylinder of plastic planted into the ground. Inside the cylinder is a single-use, large, thick plastic bag supported in a lifting harness. Above ground these look like regular trash cans; however, each unit has a far greater capacity—about 3-4 cubic yards of self-compacting trash. Due to this capacity, less frequent emptying is required, as well as, solving a number of trash related issues.

# Why Choose the In-Ground Trash Can System?

## ◆ **Operational Cost Savings—70% Labor Savings**

- ◇ Less frequent pick-up allowing for redeployment of staff time
- ◇ Lessening carbon footprint
- ◇ Reducing vehicle/equipment time and costs

## ◆ **Reduce Staff Injuries**

- ◇ Emptied with equipment which helps prevent repetitive back injuries and hernias
- ◇ Helps employees avoid physical contact with the waste
- ◇ Helps to prevent employees being stuck by syringes and cut by glass as the bags are lifted with equipment

## ◆ **Reduce Surface Litter—Once the garbage goes in the can, it stays in the can**

- ◇ Surface litter is greatly reduced as cans never tip over and the lids are locked down tightly
- ◇ Helps reduce residential trash from being placed inside your current containers adding to your waste disposal cost

## ◆ **Reduce Smell**

- ◇ Buried below grade therefore cooled by the ground naturally
- ◇ Waste compacts under its' own weight eliminating oxygen which slows decomposition helping to reduce odors
- ◇ Odor flange deflects smell back into the can
- ◇ 3.5 lb counter-weighted access opening produces positive closure reducing smell even further

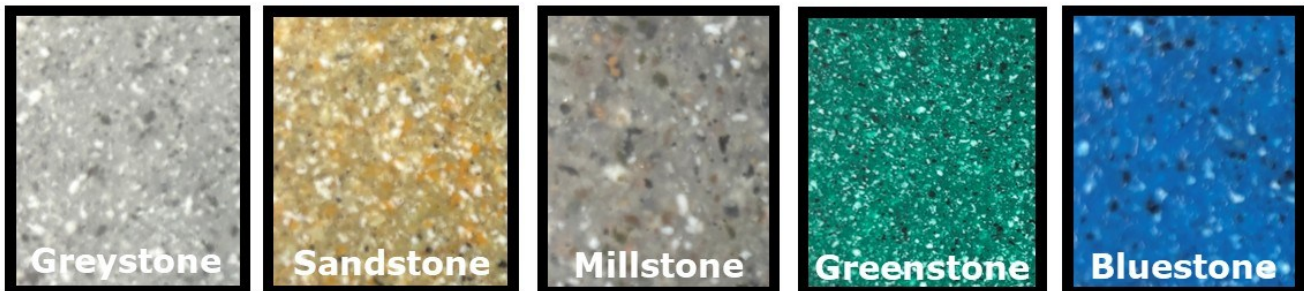
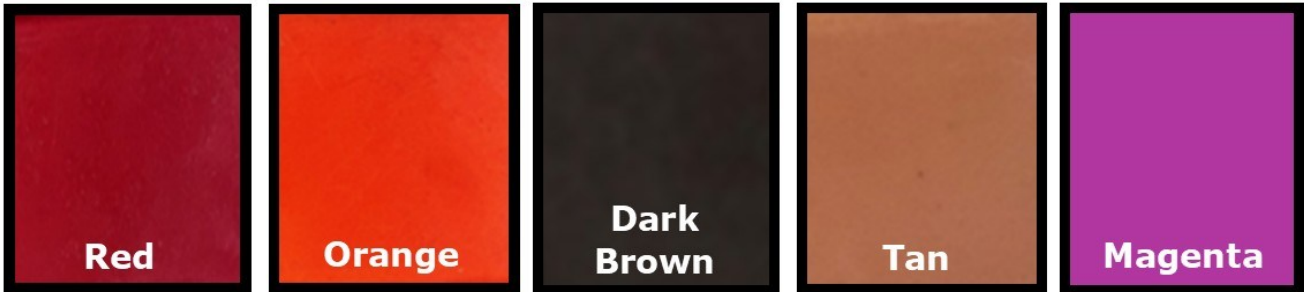
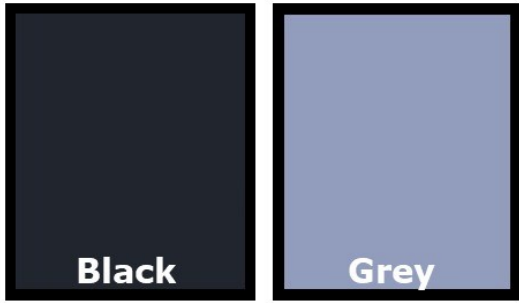
## ◆ **ADA Compliant—Our cans meet ADA requirements**

- ◇ 3.5 lb counter-weighted access opening

## ◆ **Key Features**

- ◇ One-piece polyethylene container—no leach in or out
- ◇ All stainless steel hardware
- ◇ Molded-in anchor flange for anti-flotation
- ◇ Self-closing, counter-weighted lid with seal—air & water tight
- ◇ Lifting support rack and web straps included

# Available Colors & Stone Finish Options



Custom Colors available upon request—[contact us](#) for more information.



## 4000 Model - Bear Resistant In-Ground Trash Can

- ◆ Certified as "Bear Resistant" by the North American Bear Resistant Products Testing Program by withstanding over 60 minutes of black bear contact
- ◆ 300 gallon capacity
- ◆ 8 feet tall and 30 inch diameter with water tight lid
- ◆ Sunk into the ground 5 feet for ease of use for all users—ADA compliant
- ◆ One-piece polyethylene container - no leach in or out - **.375 +/- wall thickness, using 1 shot 136 lb virgin material roto-molding process with 100% Virgin Recyclable Material (zero regrind)** for maximum product strength and integrity. All trimming and cutting components performed by CNC machine producing symmetrical, smooth, uniform finished product
- ◆ Container has odour flange—no smell of trash to attract animals, birds and insects
- ◆ Self-closing counterweighted lid with seal—ADA compliant
- ◆ Uses 10 foot waste bag —1 use only (available in black for trash & clear for recycling)
- ◆ Support rack with **.375" thick lifting platform and web straps** for lifting 10 foot waste bag
- ◆ Containers have an **exclusive to Sybertech dual keyed locking system** (patent pending)
- ◆ Poly skirt included
- ◆ Container has a flange at the bottom to assist with holding the one-piece constructed container in-ground, in frost and high water conditions—**flange thickness = 3"**
- ◆ All stainless steel hardware
- ◆ Standard colors and stone finishes available—custom colors upon request



Product #: 4000-SC / 4000-SF

## 3000 Model - In-Ground Trash Can

- ◆ 300 gallon capacity
- ◆ 8 feet tall and 30 inch diameter with water tight lid
- ◆ Sunk into the ground 5 feet for ease of use for all users—ADA compliant
- ◆ One-piece polyethylene container - no leach in or out - **.375 +/- wall thickness, using 1 shot 136 lb virgin material roto-molding process with 100% Virgin Recyclable Material (zero regrind)** for maximum product strength and integrity. All trimming and cutting components performed by CNC machine producing symmetrical, smooth, uniform finished product
- ◆ Container has odour flange—no smell of trash to attract animals, birds and insects
- ◆ Self-closing counterweighted lid with seal—ADA compliant
- ◆ Uses 10 foot waste bag —1 use only (available in black for trash & clear for recycling)
- ◆ Support rack with **.375" thick lifting platform & web straps** for lifting 10 foot waste bag
- ◆ Containers have an **exclusive to Sybertech dual keyed locking system** (patent pending) or a dual locking system for two padlocks to prevent vandalism (cost is the same for either locking system option)
- ◆ Poly skirt option available
- ◆ Container has a flange at the bottom to assist with holding the one-piece constructed container in-ground, in frost and high water conditions—**flange thickness = 3"**
- ◆ All stainless steel hardware
- ◆ Optional Custom Stainless Steel T-Handle for lid opening
- ◆ Standard colors and stone finishes available—custom colors upon request



## 2000 Model - In-Ground Trash Can

- ◆ 187 gallon capacity
- ◆ 5 feet tall and 30 inch diameter
- ◆ Sunk into the ground 2 feet
- ◆ One-piece polyethylene container—no leach in or out
- ◆ Self-closing counterweighted lid with seal—ADA compliant
- ◆ Uses 8 foot waste bag —1 use only (available in black for trash & clear for recycling)
- ◆ Support rack with web straps for lifting 8 foot waste bag
- ◆ Containers have an **exclusive to Sybertech dual keyed locking system** (patent pending) or a dual locking system for two padlocks to prevent vandalism (cost is the same for either locking system option)
- ◆ Poly skirt option available
- ◆ Container has a flange at the bottom to assist with holding the one-piece constructed container in-ground, in frost and high water conditions
- ◆ All stainless steel hardware
- ◆ Standard colors and stone finishes available—custom colors upon request



Product #: 2000-SC / 2000-SF

## 1000 Model - In-Ground Trash Can

- ◆ 54 gallon capacity
- ◆ 55 inches tall and 17 inch diameter
- ◆ Sunk into the ground 19 inches
- ◆ One-piece polyethylene container—no leach in or out
- ◆ Self-closing counterweighted lid with seal—ADA compliant
- ◆ Can use standard bag or full length bag
- ◆ Containers have a single locking system for one padlock to prevent vandalism
- ◆ Poly skirt option available
- ◆ Container has a flange at the bottom to assist with holding the one-piece constructed container in-ground, in frost and high water conditions
- ◆ All stainless steel hardware
- ◆ Standard colors and stone finishes available—custom colors upon request



Product #: 1000-SC / 1000-SF

# Millennium 500 Above Ground Trash Cans & Recycling Containers

Product #: Mill 500 - SC / Mill 500 - SF



Internal view with dual keyed locking system



Aluminum, powder-coated base anchored to ground

- Large capacity
- Aluminum base, powder coated black
- Base anchors to surface
- ADA compliant access opening
- Molded skirt, t-handle and recycle basket options available
- Replacement bag size: 47.5" x 48" (50 bags per roll)
- Great way to keep a consistent aesthetic for areas where the In-Ground Trash Can system may not be feasible



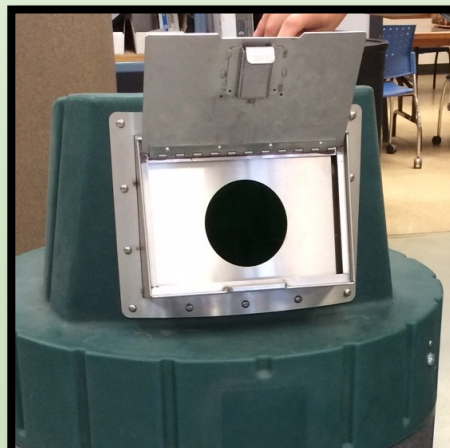
# Lid & Access Opening Options

Product #: 3101-SC NEW / 3101-SF NEW



Access Openings - Available with 5" Round Recycling, 9" Round, 9"X12" or Blank

Product #: 3101 SWRL-APO-01



Bear Resistant Access Openings - Available with 5" Round Recycling, 9" Round or 9"X12"

# Skirting Options

Product #: 5025 SC / 5025 SF



Plastic Molded Skirting—standard colors and stone finishes available—custom colors upon request

Product #: 5023



Steel Skirting—powder coated standard colors available

# Other Options

Product #: 5505



Tamper Bar

Product #: 5019



Stainless Steel T-Handle

Product #: 5017



Squirrel Guard

Product #: 5800

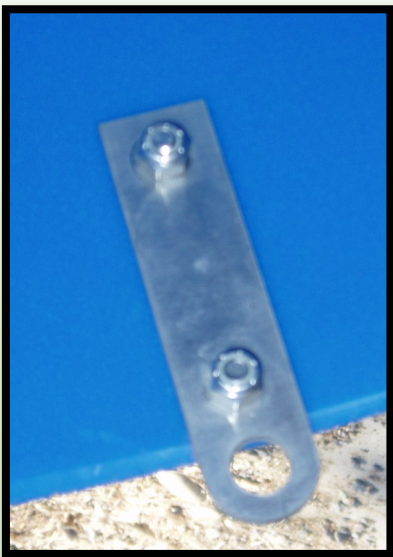


Bottles & Cans Recycle Basket

# Locking Systems Available



Dual Keyed Locking System



Dual Pad Lock Use System \*(Locks not included)

# Replacement Bags & Lifting Platform Assembly

Product #:

5503 B or 5502 C—Mill 3000 & Mill 4000

5501 B or 5501 C—Mill 2000

5500 B—Mill 1000

5602—Mill 500

Product #: 2700—Mill 2000 or 3700—Mill 3000 & Mill 4000



Available in Black for regular trash or Clear for recycling



Replacement Lifting Platform and Strap Assembly

**Mill 3000 & 4000 Bags - 30 bags per roll**

Bag Size: 47.5" X 118"

**Mill 2000 Bags - 50 bags per roll**

Bag Size: 47.5" x 87"

**Mill 1000 Bags - 75 bags per roll**

Bag Size: 27.5" x 75"

**Mill 500 Bags - 50 bags per roll**

Bag Size: 47.5" X 48"

# Multi-Can Placement & Blank Lid Use



## **MULTI-CAN PLACEMENT** **WITH BLANK LIDS**

- ◆ Install a group of In-Ground Trash Cans in high traffic areas and cap off one lid (or more) with a blank lid.
- ◆ When one can is full, simply swap lids with the blank lid can.
- ◆ Wait until all units are full and then pick them all up at once - efficiently reducing the number of pick-ups.



# Cranes for Servicing



Maxilift is a light, skilled and hi-tech crane, modern and user friendly. Thanks to its manufacturing concept and modularity, it represents the ideal solution for several fields and applications.

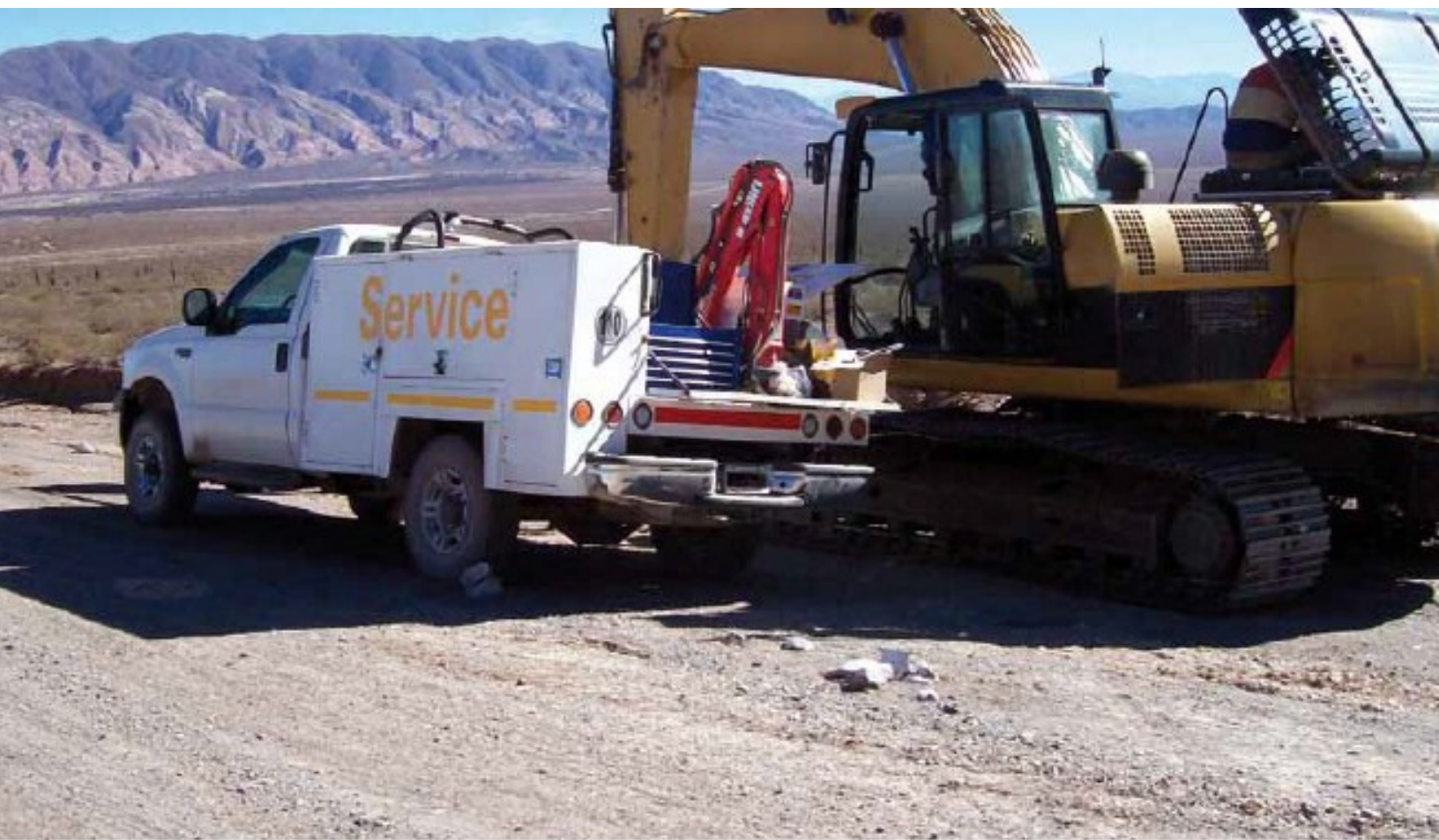


## Maxilift Advantages:

- ◆ Possible installation in different points of the body without losing payload space
- ◆ Excellent crane weight / max. loading capacity ratio
- ◆ Availability of alternative hi-tech safety systems for the same crane model
- ◆ Gradual and easy movements in whole loading spectrum
- ◆ Accurate production finishing and protection against corrosion
- ◆ Possible fitting of reliable, efficient and user-friendly remote control systems



**There are many applications for using this crane system in addition to pulling the In-Ground Trash Can bags.**



# MAXILIFT. POWER AT YOUR HAND

**Maxilift:** wide program of telescopic stiff boom cranes ideal for installation on light and extra-light vehicles..

**Maxilift:** amplia gama de grúas telescópicas ideales para instalación sobre vehículos ligeros y ultraligeros

**maxilift**  
— NH Next Hydraulics®

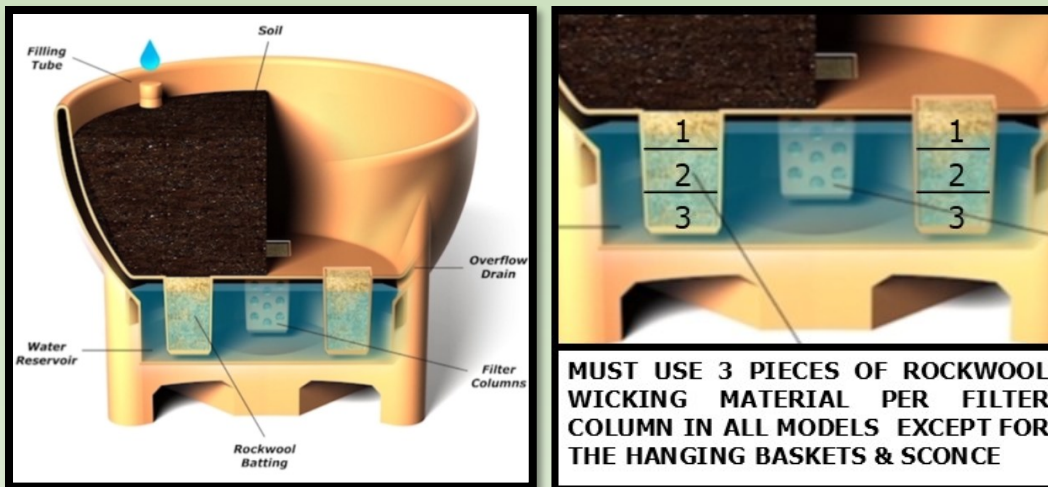
[www.maxiliftcrano.com](http://www.maxiliftcrano.com) | [www.nexthydraulics.com](http://www.nexthydraulics.com)





**Millennium Series  
Self-Watering  
Reservoir Planters  
& Hanging Baskets**

# How They Work



The Millennium series self-watering reservoir planters have a built-in water reservoir. The soil is separated by perforated filter columns which are made to accommodate the included rockwool cubes. The rockwool acts as a filter and a wicking system to deliver the right amount of water to the root zone. The Planters are designed to hold a significant amount of water to reduce the frequency of watering times. Some of our Planters can go up to a month (or more!) without watering, depending on the weather and season. The overflow drain in the reservoir ensures perfect saturation every time, even during heavy rain showers.

## Why Choose a Self-Watering Reservoir Planter?

### ◆ Operational Cost Savings

- ◆ Less frequent watering required allowing for redeployment of staff time
- ◆ Lessening carbon footprint
- ◆ Reducing vehicle/equipment time and costs

### ◆ Superior Plant Growth

- ◆ Unique bottom-feeding method employed by all Sybertech planters ensures that plants flourish
- ◆ Plants are never shocked or stressed by over or under watering—they take what they need through capillary action
- ◆ Deep rooting is encouraged because of the lower water table
- ◆ Less weed germination due to a dryer surface area resulting in a cleaner presentation

### ◆ Reduce Water Consumption

- ◆ Up to 80% reduction in water consumption reported by satisfied Sybertech customers
- ◆ Under some growing conditions, some planters only need to be filled once per month!
- ◆ Large reservoirs protect the plants from drought in addition to reducing watering time
- ◆ Overflow drain ensures that soil is never over-saturated

### ◆ Key Features

- ◆ Built-in filler tube with tethered cap to reduce vandalism
- ◆ Sybertech Planters have forklift/strap slots on the bottom for ease of movement/relocation
- ◆ Stainless Steel Chain and Hardware on Hanging Baskets
- ◆ Rockwool Wicking material is provided with each planter



# Available Designs



**Sconce Planter**  
 D: 24" W: 13" H: 16.25"  
 4.1 US Gallons / 15.52 L  
 0.56 Cubic Feet of Soil



**Conical Planter**  
 D: 33" H: 24"  
 13.2 US Gallons / 49.9 L  
 3.25 Cubic Feet of Soil



**Hanging Bowl Shaped Planters**  
 D: 20" H: 9" / 6.85 L  
 D: 24" H: 12" / 10.24 L  
 20"=0.5 Cubic Feet of Soil  
 24"=1.3 Cubic Feet of Soil



**Round End Planter**  
 L: 48" W: 20" H: 23"  
 19.67 US Gallons / 74.4 L  
 4.0 Cubic Feet of Soil



**Flat End Planter**  
 L: 48" W: 20" H: 23"  
 21 US Gallons / 79.49 L  
 4.00 Cubic Feet of Soil



**Bowl Planter**  
 D: 36" H: 23.6"  
 13.91 US Gallons / 52.6 L  
 5.5 Cubic Feet of Soil



**20 Inch Square Planter**  
 L: 20" W: 20" H: 23"  
 7.4 US Gallons / 28 L  
 1.03 Cubic Feet of Soil



**Square Planter**  
 L: 34" W: 34" H: 26"  
 41.28 US Gallons / 156 L  
 6.40 Cubic Feet of Soil



**Rectangular Planter**  
 L: 54" W: 26" H: 21"  
 50.14 US Gallons/189.91 L  
 8.60 Cubic Feet of Soil



**Round Planter**  
 D: 30" H: 20"/ 95.56 L  
 D: 36" H: 24"/ 137.61 L  
 D: 42" H: 30"/187.3 L

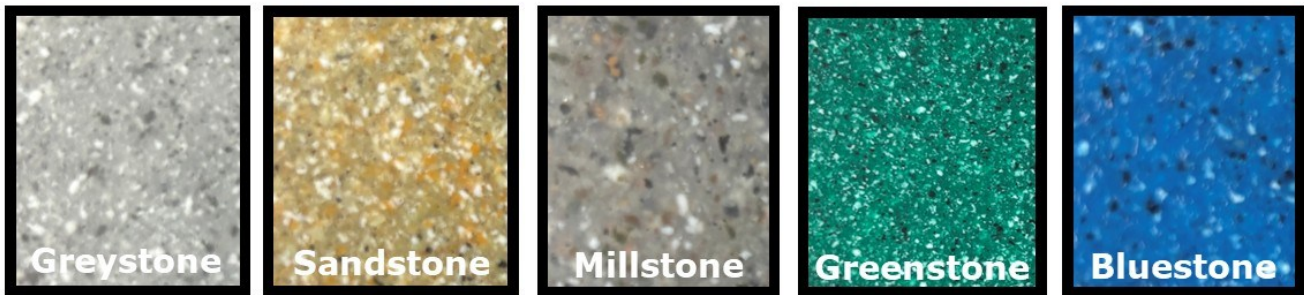
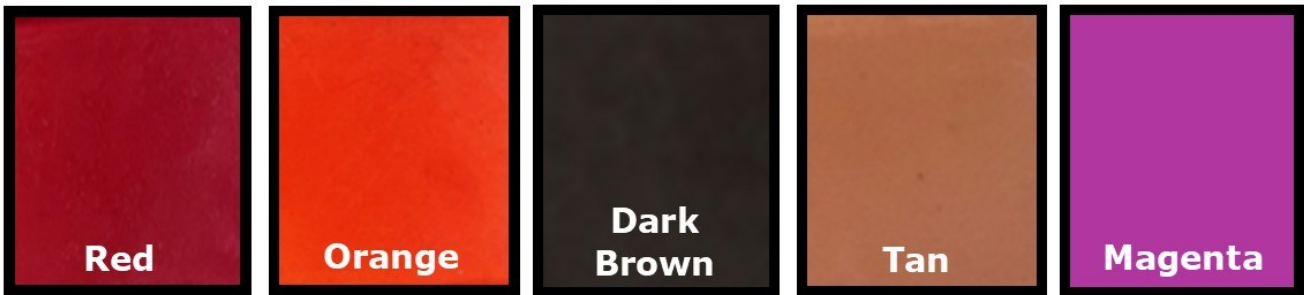
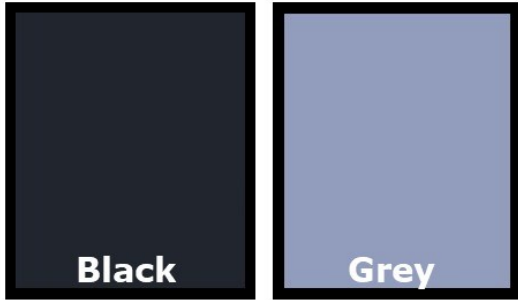


**Divider Planter**  
 L: 48.7" W: 17.8" H: 22"  
 9.72 US Gallons / 36.79 L  
 2.40 Cubic Feet of Soil

**The Millennium Series Self-Watering Reservoir Planters employ a unique bottom feeding method which encourages deep root growth resulting in a vibrant, healthy and colorful display of plants and flowers.**

**Dramatically reduce your Operational Costs while also reducing water consumption and your carbon footprint.**

# Available Colors & Stone Finish Options



Custom Colors available upon request—[contact us](#) for more information.



# Soil & Water Capacities

<b>Planter Style &amp; Size</b>	<b>Soil</b> Capacity in Cubic Feet	<b>Water</b> Capacity in U.S. Gallons	<b>Water</b> Capacity in Litres
<b>Sconce Planter</b>	<b>0.56</b>	<b>4.10</b>	<b>15.52</b>
33 Inch Conical Planter	3.25	13.20	49.90
<b>20 Inch Hanging Basket</b>	<b>0.50</b>	<b>1.80</b>	<b>6.85</b>
24 Inch Hanging Basket	1.30	2.70	10.25
<b>48 Inch Round End Planter</b>	<b>4.00</b>	<b>19.67</b>	<b>74.46</b>
48 Inch Flat End Planter	4.00	21.00	79.49
<b>36 Inch Bowl Planter</b>	<b>5.50</b>	<b>13.90</b>	<b>52.62</b>
20 Inch Square Planter	1.03	7.4	28
<b>34 Inch Square Planter</b>	<b>6.40</b>	<b>41.30</b>	<b>156.00</b>
54 Inch Rectangular Planter	8.60	50.15	189.80
<b>30 Inch Round Planter</b>	<b>3.82</b>	<b>25.25</b>	<b>95.55</b>
36 Inch Round Planter	7.50	36.35	137.60
<b>42 Inch Round Planter</b>	<b>13.90</b>	<b>49.50</b>	<b>187.30</b>
48 Inch Divider Planter	2.40	9.72	36.79

## What is the best soil mixture to use in a Sybertech Self-Watering Reservoir Planter?

Depending on your type of crop, some plants will require richer blends or flowering blends. What you want to avoid is a mix that has too much peat, coco or vermiculite since they have poor water retention qualities. Also to be avoided, very rich or heavy blends of soil that contain clay since the water retention is too great.

We recommend a 50/50 blend of peat or coco along with a good quality soil (crop specific) which will provide both nutrients and water drainage to your root zone.



# Protected Bike Lanes & Crosswalk Applications



Sybertech Self-Watering Reservoir Planters aid in protected bike lanes and crosswalk applications by acting as a physical barrier that separates cyclists and pedestrians from vehicle traffic. They enhance visibility and safety while adding greenery and beauty to urban spaces, helping to create a more secure and calming environment for everyone as they share the roadways.

# Outdoor Patio Spaces & School/Community Gardens



Our Self-Watering Reservoir Planters are also a great addition to outdoor patio/parklet spaces and school/community gardens as they simplify garden maintenance and improve plant health. As a result, everyone can enjoy a flourishing garden with less effort and watering frequencies required, fostering a stronger sense of shared accomplishment and connection.

# Streetscape Beautification Projects & Residential Use



Sybertech Planters are an excellent choice for streetscape beautification projects, providing a sustainable and efficient way to enhance urban green spaces. They are also a fantastic addition to any residential setting, offering a practical solution for busy homeowners or those looking to simplify their gardening routine. With their low-maintenance nature, Self-Watering Reservoir Planters ensure that plants remain healthy and vibrant, even when life gets hectic.

## Sconce Self-Watering Reservoir Planter

- ◆ 24" Diameter 16.25" Height 13" Width
  - ◆ Water Reservoir Capacity of 15.15 Litres or 4 US Gallons
  - ◆ 0.50 Cubic Feet of Soil
  - ◆ One-piece 1 shot roto-mould construction using UV protected Virgin polyethylene for superior strength, durability and life expectancy
  - ◆ Soil depth 7"
  - ◆ 2 filter columns to deliver water to soil
  - ◆ Overflow Drain
  - ◆ Cleanout access for reservoir
  - ◆ Comes with 4 pieces of rock wool for filter columns
  - ◆ Planter weight unfilled: 4.31 kgs / 9.5 lbs
  - ◆ Planter weight filled: 24 kgs / 52.9 lbs
- \*Weights may vary depending on soil/plants used



Product #:  
6025WS-SC / 6026WS-SF

## 33" Conical Self-Watering Reservoir Planter

- ◆ 33" Diameter 24" Height
  - ◆ Water Reservoir Capacity of 49.9 Litres or 13.2 US Gallons
  - ◆ 3.25 Cubic Feet of Soil
  - ◆ One-piece 1 shot roto-mould construction using UV protected Virgin polyethylene for superior strength, durability and life expectancy
  - ◆ Soil depth 13.6"
  - ◆ New molded-in filler tube with tethered cap to reduce vandalism
  - ◆ Forklift/strap slots for ease of movement/relocation
  - ◆ 4 filter columns to deliver water to soil
  - ◆ Overflow Drain
  - ◆ Cleanout access for reservoir
  - ◆ Comes with 12 pieces of rock wool for filter columns
  - ◆ Planter weight unfilled: 16.8 kgs / 37 lbs
  - ◆ Planter weight filled: 96.2 kgs / 212 lbs
- \*Weights may vary depending on soil/plants used



Product #:  
6033CO-SC / 6033CO-SF

## 20" Hanging Basket Self-Watering Reservoir Planter

- ◆ 20" Diameter x 9" Height
- ◆ Water Reservoir Capacity of 6.85 Litres or 1.8 US Gallons
- ◆ 0.50 Cubic Feet of Soil
- ◆ One-piece 1 shot roto-mould construction using UV protected Virgin polyethylene for superior strength, durability and life expectancy
- ◆ Soil depth 6 9/16"
- ◆ Stainless Steel Chain and Hardware
- ◆ 3 filter columns to deliver water to soil
- ◆ Overflow Drain
- ◆ Cleanout access for reservoir
- ◆ Comes with 3 pieces of rock wool for filter columns
- ◆ Planter weight unfilled: 3.28 kgs / 7.25 lbs
- ◆ Planter weight filled: 14.67 kgs / 32.35 lbs  
\*Weights may vary depending on soil/plants used



Product #:  
6020HP-SC /6020HP-SF



## 24" Hanging Basket Self-Watering Reservoir Planter

- ◆ 24" Diameter x 12" Height
- ◆ Water Reservoir Capacity of 10.24 Litres or 2.7 US Gallons
- ◆ 1.30 Cubic Feet of Soil
- ◆ One-piece 1 shot roto-mould construction using UV protected Virgin polyethylene for superior strength, durability and life expectancy
- ◆ Soil depth 8 7/16"
- ◆ Stainless Steel Chain and Hardware
- ◆ 3 filter columns to deliver water to soil
- ◆ Overflow Drain
- ◆ Cleanout access for reservoir
- ◆ Comes with 3 pieces of rock wool for filter columns
- ◆ Planter weight unfilled: 4.99 kgs / 11 lbs
- ◆ Planter weight filled: 27.02 kgs / 59.57 lbs  
\*Weights may vary depending on soil/plants used



Product #:  
6024HP-SC /6024HP-SF



## 48" Round End Self-Watering Reservoir Planter

- ◆ 48"L x 20"W x 23"H
- ◆ Water Reservoir Capacity of 74.46 Litres or 19.67 US Gallons
- ◆ 3.72 Cubic Feet of Soil
- ◆ One-piece 1 shot roto-mould construction using UV protected Virgin polyethylene for superior strength, durability and life expectancy
- ◆ Soil depth 13"
- ◆ New molded-in filler tube with tethered cap to reduce vandalism
- ◆ Forklift/strap slots for ease of movement/relocation
- ◆ 3 filter columns to deliver water to soil
- ◆ Overflow Drain
- ◆ Cleanout access for reservoir
- ◆ Comes with 9 pieces of rock wool for filter columns
- ◆ Planter weight unfilled: 21.8 kgs / 48 lbs
- ◆ Planter weight filled: 130 kgs / 286.5 lbs

\*Weights may vary depending on soil/plants used



Product #:  
6049RR-SC / 6049RR-SF



## 48" Flat End Self-Watering Reservoir Planter

- ◆ 48"L x 20"W x 23"H
- ◆ Water Reservoir Capacity of 79.49 Litres or 21.04 US Gallons
- ◆ 3.96 Cubic Feet of Soil
- ◆ Soil depth 13"
- ◆ One-piece 1 shot roto-mould construction using UV protected Virgin polyethylene for superior strength, durability and life expectancy
- ◆ New molded-in filler tube with tethered cap to reduce vandalism
- ◆ Forklift/strap slots for ease of movement/relocation
- ◆ 3 filter columns to deliver water to soil
- ◆ Overflow Drain
- ◆ Cleanout access for reservoir
- ◆ Comes with 9 pieces of rock wool for filter columns
- ◆ Planter weight unfilled: 24.5 kgs / 54 lbs
- ◆ Planter weight filled: 139.9 kgs / 308.44 lbs

\*Weights may vary depending on soil/plants used



Product #:  
6050RF-SC / 6050RF-SF



## 36" Bowl Self-Watering Reservoir Planter

- ◆ 36" Diameter 23.6" Height
- ◆ Water Reservoir Capacity of 52.62 Litres or 13.91 US Gallons
- ◆ 5.5 Cubic Feet of Soil
- ◆ One-piece 1 shot roto-mould construction using UV protected Virgin polyethylene for superior strength, durability and life expectancy
- ◆ Soil depth 14"
- ◆ New molded-in filler tube with tethered cap to reduce vandalism
- ◆ Forklift/strap slots for ease of movement/relocation
- ◆ 4 filter columns to deliver water to soil
- ◆ Overflow Drain
- ◆ Cleanout access for reservoir
- ◆ Comes with 12 pieces of rock wool for filter columns
- ◆ Planter weight unfilled: 20.64 kgs / 45.5 lbs
- ◆ Planter weight filled: 123.3 kgs / 271.5 lbs

\*Weights may vary depending on soil/plants used



Product #:  
6037BO-SC / 6037BO-SF

## 20" Square Self-Watering Reservoir Planter

- ◆ 20"L x 20"W x 23"H
- ◆ Water Reservoir Capacity of 28 Litres or 7.4 US Gallons
- ◆ 1.03 Cubic Feet of Soil
- ◆ One-piece 1 shot roto-mould construction using UV protected Virgin polyethylene for superior strength, durability and life expectancy
- ◆ Soil depth 13.6"
- ◆ New molded-in filler tube with tethered cap to reduce vandalism
- ◆ 1 filter column to deliver water to soil
- ◆ Overflow Drain
- ◆ Cleanout access for reservoir
- ◆ Comes with 3 pieces of rock wool for filter column
- ◆ Planter weight unfilled: 8.16 kgs / 18 lbs
- ◆ Planter weight filled: 45.5 kgs / 100.3 lbs

\*Weights may vary depending on soil/plants used



Product #:  
6020SQ-SC / 6020SQ-SF

## 34" Square Self-Watering Reservoir Planter

- ◆ 34"L x 34"W x 26"H
- ◆ Water Reservoir Capacity of 156 Litres or 41.28 US Gallons
- ◆ 6.40 Cubic Feet of Soil
- ◆ One-piece 1 shot roto-mould construction using UV protected Virgin polyethylene for superior strength, durability and life expectancy
- ◆ Soil depth 13.6"
- ◆ New molded-in filler tube with tethered cap to reduce vandalism
- ◆ Forklift/strap slots for ease of movement/relocation
- ◆ 4 filter columns to deliver water to soil
- ◆ Overflow Drain
- ◆ Cleanout access for reservoir
- ◆ Comes with 12 pieces of rock wool for filter columns
- ◆ Planter weight unfilled: 28.1 kgs / 62 lbs
- ◆ Planter weight filled: 242.2 kgs / 533.9 lbs  
\*Weights may vary depending on soil/plants used



Product #:  
6034SQ-SC / 6034SQ-SF

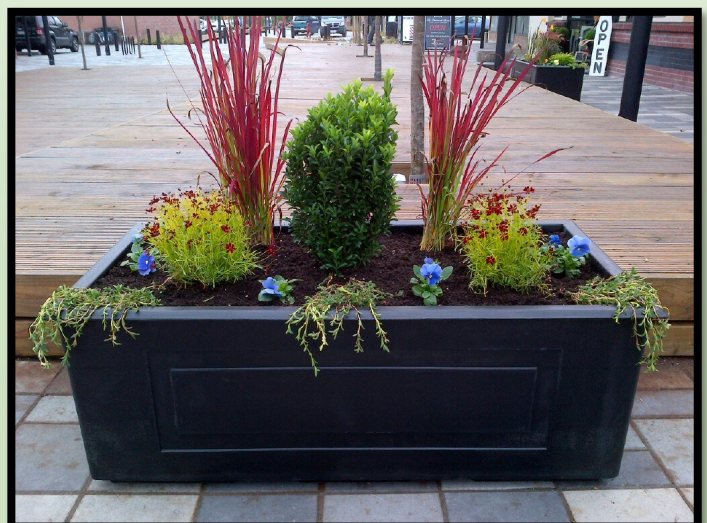


## 54" Rectangular Self-Watering Reservoir Planter

- ◆ 54"L x 26"W x 21"H
- ◆ Water Reservoir Capacity of 189.80 Litres or 50.15 US Gallons
- ◆ 8.6 Cubic Feet of Soil
- ◆ One-piece 1 shot roto-mould construction using UV protected Virgin polyethylene for superior strength, durability and life expectancy
- ◆ Soil depth 13.6"
- ◆ New molded-in filler tube with tethered cap to reduce vandalism
- ◆ Forklift/strap slots for ease of movement/relocation
- ◆ 6 filter columns to deliver water to soil
- ◆ Overflow Drain
- ◆ Cleanout access for reservoir
- ◆ Comes with 18 pieces of rock wool for filter columns
- ◆ Planter weight unfilled: 25.4 kgs / 56 lbs
- ◆ Planter weight filled: 292.8 kgs / 645.6 lbs  
\*Weights may vary depending on soil/plants used



Product #:  
6054RE-SC / 6054RE-SF



## 30" Round Self-Watering Reservoir Planter

- ◆ 30" D X 20" H
- ◆ Water Reservoir Capacity of 95.56 Litres or 25.24 US Gallons
- ◆ 3.82 Cubic Feet of Soil
- ◆ One-piece 1 shot roto-mould construction using UV protected Virgin polyethylene for superior strength, durability and life expectancy
- ◆ Soil depth 13"
- ◆ New molded-in filler tube with tethered cap to reduce vandalism
- ◆ Forklift/strap slots for ease of movement/relocation
- ◆ 4 filter columns to deliver water to soil
- ◆ Overflow Drain
- ◆ Cleanout access for reservoir
- ◆ Comes with 12 pieces of rock wool for filter columns
- ◆ Planter weight unfilled: 13.15 kgs / 29 lbs
- ◆ Planter weight filled: 143.15 kgs / 315.6 lbs

\*Weights may vary depending on soil/plants used



Product #:

6030RO-SC / 6030RO-SF



## 36" Round Self-Watering Reservoir Planter

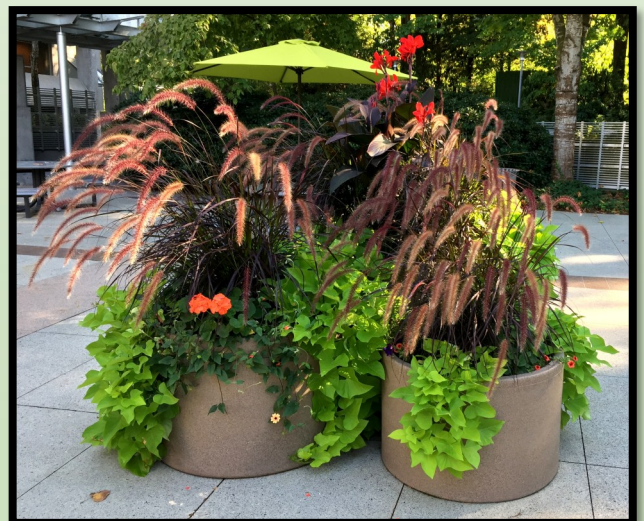
- ◆ 36" D X 24" H
- ◆ Water Reservoir Capacity of 137.60 Litres or 36.35 US Gallons
- ◆ 7.50 Cubic Feet of Soil
- ◆ One-piece 1 shot roto-mould construction using UV protected Virgin polyethylene for superior strength, durability and life expectancy
- ◆ Soil depth 13"
- ◆ New molded-in filler tube with tethered cap to reduce vandalism
- ◆ Forklift/strap slots for ease of movement/relocation
- ◆ 4 filter columns to deliver water to soil
- ◆ Overflow Drain
- ◆ Cleanout access for reservoir
- ◆ Comes with 12 pieces of rock wool for filter columns
- ◆ Planter weight unfilled: 20.86 kgs / 46 lbs
- ◆ Planter weight filled: 226.2 kgs / 498.7 lbs

\*Weights may vary depending on soil/plants used



Product #:

6036RO-SC / 6036RO-SF



## 42" Round Self-Watering Reservoir Planter

- ◆ 42" D X 30" H
- ◆ Water Reservoir Capacity of 187.3 Litres or 49.48 US Gallons
- ◆ 13.9 Cubic Feet of Soil
- ◆ One-piece 1 shot roto-mould construction using UV protected Virgin polyethylene for superior strength, durability and life expectancy
- ◆ Soil depth 14"
- ◆ New molded-in filler tube with tethered cap to reduce vandalism
- ◆ Forklift/strap slots for ease of movement/relocation
- ◆ 4 filter columns to deliver water to soil
- ◆ Overflow Drain
- ◆ Cleanout access for reservoir
- ◆ Comes with 18 pieces of rock wool for filter columns
- ◆ Planter weight unfilled: 31.3 kgs / 69 lbs
- ◆ Planter weight filled: 344.3 kgs / 759.1 lbs  
\*Weights may vary depending on soil/plants used



Product #:  
6042RO-SC / 6042RO-SF



## 48" Divider Self-Watering Reservoir Planter

- ◆ 48.7"L x 17.8"W x 22"H
- ◆ Water Reservoir Capacity of 36.79 Litres or 9.72 US Gallons
- ◆ 2.40 Cubic Feet of Soil
- ◆ One-piece 1 shot roto-mould construction using UV protected Virgin polyethylene for superior strength, durability and life expectancy
- ◆ Soil depth 13.6"
- ◆ New molded-in filler tube with tethered cap to reduce vandalism
- ◆ 4 filter columns to deliver water to soil
- ◆ Overflow Drain
- ◆ Cleanout access for reservoir
- ◆ Comes with 12 pieces of rock wool for filter columns
- ◆ Planter weight unfilled: 21.55 kgs / 47.5 lbs
- ◆ Planter weight filled: 80.1 kgs / 176.6 lbs  
\*Weights may vary depending on soil/plants used



Product #:  
6048DV-SC / 6048DV-SF





**DOG HOUSE  
DOG WASTE BAG**



Thank you for cleaning up after your dog and disposing of this bag in an appropriate container

Made from 100% recyclable materials



**TAKE A BAG**  
↓

**Dog House Stations and Waste Bags**

# Dog House Stations



- ◆ Two Dog House designs available: Front-Pull and Bottom-Pull
- ◆ Dog House Stations are made with powder-coated aluminum
- ◆ 2-piece construction for use with a padlock
- ◆ Bags are made in North America from 100% recyclable materials
- ◆ Ideal for dog parks, community trails, recreation and sports fields, beaches, hotels, university campuses and much more!
- ◆ Customizable printing available

Product #: 90ST-6

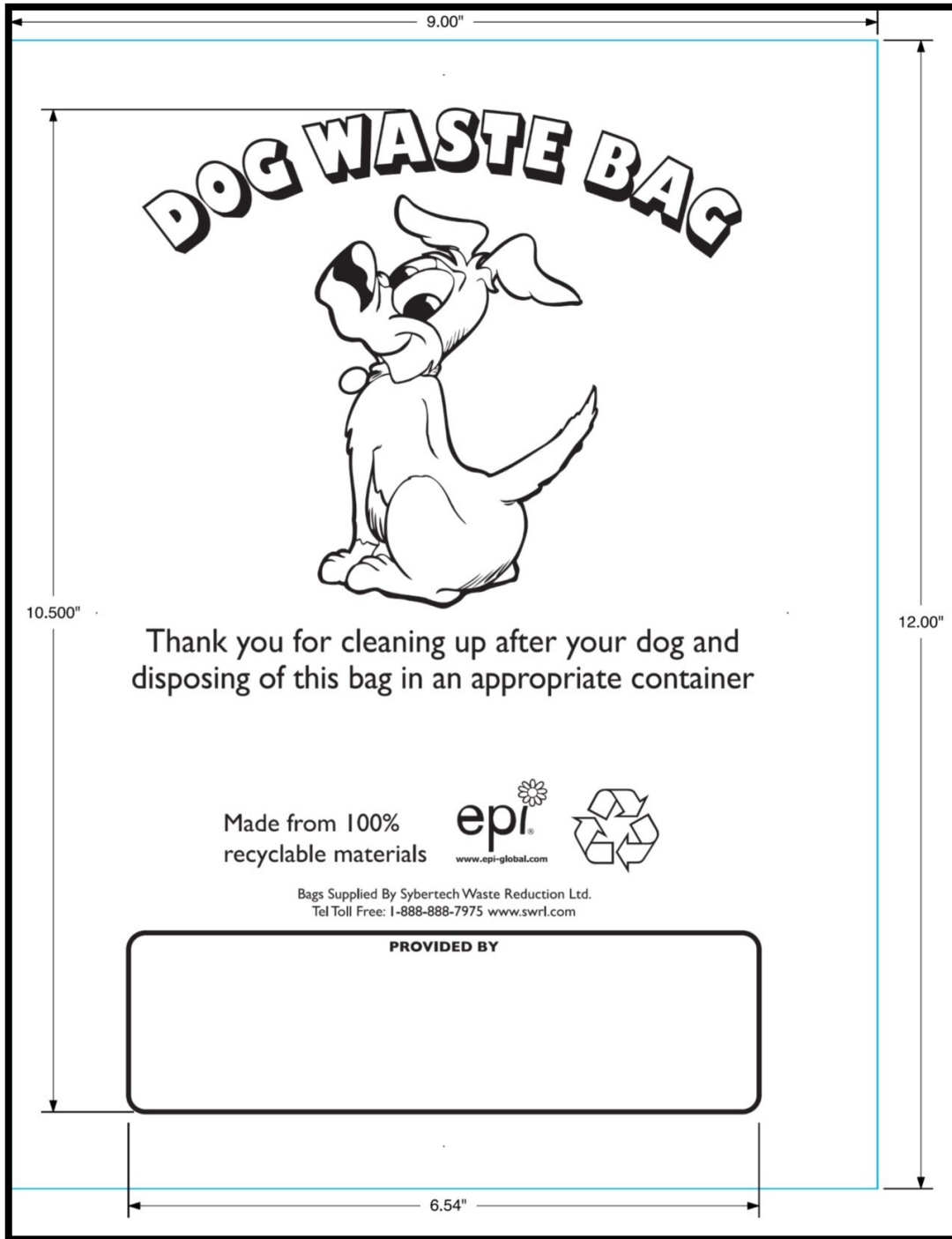


Standard Dog Waste Bag Dispenser  
Bottom Pull Style - Holds 1 case of  
1000 bags

Product #: 90ST-13



Large Dog Waste Bag Dispenser  
Front Pull Style - holds bundles of 250  
Bags Stapled Pack



- ◆ Bags are made in North America from 100% recyclable materials
- ◆ Customizable printing available

Product #: 90ST-8

Dog Waste Bags standard printed

9 x 12

1000 per Box for use with dispenser 90ST-6

Product #: 90ST-12

Large Dog Waste standard printed

9.75 x 12 + 1.5" lip - 1 mil White Poly Bag Printed, 1 color/1 side

5" centre holes, staple pack, 250 bags /bundle

2000 bags/case for use with dispenser 90ST-13

**Get-a-Grip™** Stainless Steel Stair Treads are great for all kinds of safety applications, including stairs, wood decks, ramps, marinas and wharfs. They can be applied to any wooden surface, including treated wood. They are also compatible with brushed concrete (requires an additional procedure).

Get-a-Grip™ stair treads meet Building code requirements under wet conditions: Section 7.2.7 Slip Resistance Test of: · CAN/CGSB-75.1-VM88 · ASTM C1028-07

Prevent Falls:

Get a Grip on slippery surfaces



Stainless Steel Stair Treads

For wet, greasy, slimy, frosty, moss covered stairs

- ◆ Installs easily in minutes
- ◆ Made completely of stainless steel
- ◆ Helps to prevent slips and falls (2nd highest accidental death, next to cars)
- ◆ Great for curves and angles
- ◆ Will not corrode or discolor
- ◆ Light reflective for those dark foot paths
- ◆ Removable and reusable
- ◆ Barefoot friendly and Pet friendly
- ◆ Size: 2 x 24 inches - 6 pieces per box





The Original  
**E-Z Reacher®**

*The Heavy Duty Outdoor  
Pick-Up & Clean-Up Tool*



The **Arcoa e-Z Reacher®** is the heavy duty helper at home, in the garden or on the job. With this innovative tool, everything is within reach without stretching, straining or bending. Easily pick up trash and debris, and keep your hands away from unsanitary items. Your customers will work more quickly, safely and efficiently with the e-Z Reacher®—the original rubber cup reacher!

### Product Features

- ◆ No bending, stretching, or straining, so it's easy on your back, knees and hands
- ◆ Retrieving hard-to-reach items is a snap because the E-Z Reacher comes in 32", 40" and 48" lengths
- ◆ With the versatile E-Z Reacher, you can pick up objects as small as a dime or as heavy as a five-pound brick
- ◆ The durable E-Z Reacher's replaceable rubber cups are easy to clean, and it's made of lightweight aluminum that won't rust



# BULB EATER® 3

with Intelli Technology

## The safe, efficient way to recycle fluorescent lamps.

The Bulb Eater® 3 system not only crushes spent fluorescent lamps of any length, u-tubes, and CFL's into 100% recyclable material, but it also captures over 99.99% of the vapors released! The system, which is mounted to a 55-gallon drum, can hold up to 1350 4' fluorescent lamps. A five-stage filtering process removes hazardous particulates and vapors. A recent study showed non-detectable levels of emitted mercury vapor even after crushing 1700 lamps. A digital control panel gives the operator added security by monitoring various aspects of the machine to better ensure operator safety.

In addition to providing OSHA and ACGIH compliance, the Bulb Eater® 3 frees up valuable storage space normally filled with boxes of spent intact lamps, reduces handling and related labor costs, and typically cuts recycling costs by 50% or more.

### Onboard controls with *Intelli Technology*

- Multiple sensing points that assist with machine diagnostics and maintenance/filter change-outs.

1. Powerful DC motor crushes lamps from 1' to 8' long in less than one second!
2. Removable entry tubes accommodate all lengths and diameters of linear lamps. Lower angle and entry height improve operator comfort.
3. Digital control panel with LCD display and self-diagnostic fault codes.
4. Removable CFL/U-tube chute allows for any size of fluorescent lamps (sold separately).
5. New 5-Stage Filter System
  - Cyclone separator filters most of the particles back into the drum.
  - Upgraded cartridge filter catches any fine particles (2nd stage).
  - Dual-action, replaceable HEPA filter removes particulates (3rd & 5th stage).
  - 4th stage Activated Carbon filter captures and neutralizes mercury vapors released during the controlled crushing of lamps.
6. 55-gallon drum (sold separately) will hold approximately 1,350 4' T8 crushed lamps to reduce storage requirements and handling prior to recycling.



**Request Quote Today!**

**1-888-888-7975**

The Bulb Eater® was named a "Money Saving Product for 2012" by Buildings Magazine.

# Machine Benefits



**Eliminate storage hassles** - Reduce your needed storage space for lamps by crushing 1350 T8 4' lamps per 55-gallon drum.

**Reduce handling** - Handle your spent bulbs once. Simply roll your Bulb Eater® lamp crushing system on a 55-gallon drum dolly (sold separately) to the work area or into a storage area. Save roughly 20 hours of labor per 1000 lamps by crushing rather than boxing the lamps!

**Safer work environment** - EPA studies show an estimated 2-3% accidental breakage rate while boxing lamps prior to pick-up. The 0.001% emission rate from the Bulb Eater® lamp crushing system provides for less mercury vapor emission. Your workers are not only safer, but your liability is reduced!

**Cut costs** - By pre-crushing the lamps, facilities are able to save money on their lamp recycling costs. Savings are typically anywhere from a dime to \$1 per lamp!

**Nationwide recycling program** - Enjoy competitive rates for lamp recycling. Fully permitted trucks are used for transportation and Certificates of Recycling are provided once the lamps are recycled.

## The Bulb Eater® 3 Specifications

<b>FEED RATE</b>	30 lamps per minute (Operator's speed may vary)		
<b>CRUSHED LAMP CAPACITY</b> <small>*Approximate; individual experience may vary</small>	1500	4' T5 Straight Lamps (0.625" diameter) per drum	
	1350	4' T8 Straight Lamps (1.0" diameter) per drum	
	875	4' T12 Straight Lamps (1.5" diameter) per drum	
	300	4' T17 Straight Lamps (2.0" diameter) per drum	
	400	8' T12 Straight Lamps (1.5" diameter) per drum	
	550	4' T12 U-tube Lamps (1.5" diameter) per drum	
<b>FILTRATION</b>  <small><sup>1</sup> Air Sampling for Mercury Vapor and Particulates, As tested by Burea Veritas (N.A.) on June 10th, 2013; Results based upon crushing 1700 T12 4' fluorescent lamps and changing the drums out twice in a warehouse and small office with normal ventilation.</small>	Exposure In Operator's Breathing Zone		All air sample results collected during assessment were below the limits of analytical detection, and less than the OSHA PEL (0.1 mg/m <sup>3</sup> ) and the ACGIH TLV (0.1 mg/m <sup>3</sup> )
		High Capacity Cartridge Filter (Approximate life: 6 drums)	1 micron @ 99% particle retention
		H.E.P.A. Filter (Approximate life: 12 drums)	.3 micron @ 99.99% particle retention (Exceeds H.E.P.A. standard @ 99.97%)
		Activated Carbon Filter (1500 hrs. running time)	Calculated life of approximately 1 million lamps
<b>CONTROL PANEL</b>		Control Panel with a Digital LCD Display with <i>Intelli Technology</i>	LCD Display for indicating which mode the machine is in and any defaults that might occur. Additional measuring points that assist with machine diagnostics and maintenance/ filter change outs. Emergency stop button, start/stop button.
<b>VACUUM MOTOR</b>	500 watts - 120v		
	1/5 h.p. - 2 amp - 120v		

The Bulb Eater® was awarded "Top 100 Product" by Buildings Magazine!

**Call Today!**

**1-888-888-7975**

# Sybertech Waste Reduction Ltd.

# BULB EATER® 3L

with Intelli Technology®

## The safe, efficient way to recycle fluorescent lamps.

The Bulb Eater® 3L system not only crushes spent fluorescent lamps of any length, u-tubes, and CFL's into 100% recyclable material, but it also captures over 99.99% of the vapors released! The system, which is mounted to a 55-gallon drum, can hold up to 1350 4' fluorescent lamps. A four-stage filtering process removes hazardous particulates and vapors. A recent study showed non-detectable levels of emitted mercury vapor even after crushing 1700 lamps. A digital control panel gives the operator added security by monitoring various aspects of the machine to better ensure operator safety.

In addition to providing OSHA and ACGIH compliance, the Bulb Eater® 3L frees up valuable storage space normally filled with boxes of spent intact lamps, reduces handling and related labor costs, and typically cuts recycling costs by 50% or more.

### Onboard controls with *Intelli Technology*®

- Multiple sensing points that assist with machine diagnostics and maintenance/filter change-outs.

1. Powerful DC motor crushes lamps from 1' to 8' long in less than one second!
2. Removable entry tubes accommodate all lengths and diameters of linear lamps. Lower angle and entry height improve operator comfort.
3. Digital control panel with LCD display and self-diagnostic fault codes.
4. Removable CFL/U-tube chute allows for any size of fluorescent lamps.
5. New 4-Stage Filter System
  - Upgraded cartridge filter catches any fine particles (1st stage).
  - Dual-action, replaceable HEPA filter removes particulates (2nd & 4th stage).
  - 3rd stage Activated Carbon filter captures and neutralizes mercury vapors released during the controlled crushing of lamps.
6. 55-gallon drum (sold separately) will hold approximately 1,350 4' T8 crushed lamps to reduce storage requirements and handling prior to recycling.



**Online Bulb Eater® 3L Certified Training Program**  
This program includes a training video, quiz, and certificate of completion.



**Request Quote Today!**  
**1-888-888-7975**



The Bulb Eater® 3 with Intelli Technology® was named a "Money Saving Product for 2015" by Buildings Magazine and "New Product of the Year for 2015" by Environmental Protection.

# Machine Benefits



**Eliminate storage hassles** - Reduce your needed storage space for lamps by crushing 1350 T8 4' lamps per 55-gallon drum.

**Reduce handling** - Handle your spent bulbs once. Simply roll your Bulb Eater® lamp crushing system on a 55-gallon drum dolly (sold separately) to the work area or into a storage area. Save roughly 20 hours of labor per 1000 lamps by crushing rather than boxing the lamps!





**Safer work environment** - EPA studies show an estimated 2-3% accidental breakage rate while boxing lamps prior to pick-up. The 0.001% emission rate from the Bulb Eater® lamp crushing system provides for less mercury vapor emission. Your workers are not only safer, but your liability is reduced!

**Cut costs** - By pre-crushing the lamps, facilities are able to save money on their lamp recycling costs. Savings are typically anywhere from a dime to \$1 per lamp!

**Nationwide recycling program** - Enjoy competitive rates for lamp recycling. Fully permitted trucks are used for transportation and Certificates of Recycling are provided once the lamps are recycled.

**Bulb Eater® 3L Certified Training** - online, 5-step program covering Bulb Eater® 3L assembly, operations, safety, and maintenance. This program includes a training video, quiz, and certificate of completion.

## The Bulb Eater® 3L Specifications

<b>FEED RATE</b>	30 lamps per minute (Operator's speed may vary)		
<b>CRUSHED LAMP CAPACITY</b> <small>*Approximate; individual experience may vary</small>	1500	4' T5 Straight Lamps (0.625" diameter) per drum	
	1350	4' T8 Straight Lamps (1.0" diameter) per drum	
	875	4' T12 Straight Lamps (1.5" diameter) per drum	
	300	4' T17 Straight Lamps (2.0" diameter) per drum	
	400	8' T12 Straight Lamps (1.5" diameter) per drum	
	550	4' T12 U-tube Lamps (1.5" diameter) per drum	
	3,000	CFL's (Compact Fluorescent Lamps) per drum	
<b>FILTRATION</b>  <small><sup>1</sup> Air Sampling for Mercury Vapor and Particulates, As tested by Burea Veritas (N.A.) on September 8th, 2016 Results based upon crushing 2500 4' fluorescent lamps and changing the drums out twice in a warehouse and small office with normal ventilation.</small>	Exposure In Operator's Breathing Zone	<sup>1</sup> All air sample results collected during assessment were below the limits of analytical detection, and less than the OSHA PEL (0.1 mg/m <sup>3</sup> ) and ACGIH TLV (0.025 mg/m <sup>3</sup> )	
		High Capacity Cartridge Filter (Approximate life: 4 drums)	1 micron @ 99% particle retention
		H.E.P.A. Filter (Approximate life: 12 drums)	.3 micron @ 99.99% particle retention (Exceeds H.E.P.A. standard @ 99.97%)
		Activated Carbon Filter (1500 hrs. running time)	Calculated life of approximately 1 million lamps
<b>CONTROL PANEL</b>		Control Panel with a Digital LCD Display with <b>Intelli Technology</b> ®	LCD Display for indicating which mode the machine is in and any defaults that might occur. Additional measuring points that assist with machine diagnostics and maintenance/ filter change outs. Emergency stop button, start/stop button.
<b>TOTAL FULL LOAD AMPS</b>	8.5 amps @ 120 vac, 50-60 Hz, single phase; 4.25 amps @240 vac, 50-60 Hz, single phase		
<b>VACUUM</b>	Flow-through type vacuum motor, series wound, brush type, 5.42 amps, 120 vac, 650 w, 60 Hz, single phase		
<b>ETL Certified</b>	UL 73: Issued: 2011/03/02 Ed: 10 UL Standard for Safety for Motor-Operated Appliances CAN/CSA C22.2 No. 68: Issue: 2009/09/01 Ed: 7 Motor-Operated Appliances		
<b>MOTOR</b>	TENV Enclosure, 1/5 h.p. – 2 amp – 120vdc		

**Model #'s ; Description**  
 333-100-120 ; 110v, BE 3L crushes straight, u-bend, & CFL lamps  
 333-100-240 ; 220v, BE 3L crushes straight, u-bend, & CFL lamps

**Call Today!**  
**1-888-888-7975**



# Hazardous Waste Removal Services

## Biohazardous and Industrial Waste Treatment and Disposal

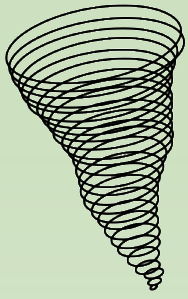
Sybertech Waste Reduction Inc. has been assisting Western Canadian businesses with managing their industrial waste streams and hazardous waste for many years. Fortune 500 corporations, municipal, provincial, and federal government agencies, and small companies continue to rely on our turnkey waste management and disposal services. We assist clients in all aspects of hazardous waste management including:

- ◆ Corporate and facility wide on-site waste management system implementation and supervision
- ◆ In-house chemical analysis for waste identification and characterization
- ◆ Preparation of required documentation including waste profiles, manifests, and container labels
- ◆ Lab-packing, container cleanup and waste consolidation
- ◆ Waste removal and transportation
- ◆ Confined space entry and cleanup
- ◆ Waste disposal including recycling, fuel recovery, and incineration
- ◆ Supply of drums, overpacks, vermiculite, absorbents, etc. for waste packing and removal

These services can be provided for the following waste categories:

- ◆ Biohazardous waste
- ◆ Waste treatment and disposal - inorganic
- ◆ Waste treatment and disposal - organic
- ◆ Alternative fuel recycling
- ◆ Household hazardous waste
- ◆ Solvent recycling
- ◆ Compressed gas cylinders and aerosols





# **SYBERTECH**

*Waste Reduction Ltd.*

**Sybertech** is committed to bringing new and innovative products, services and solutions to our customers.

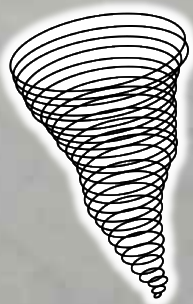
We aim to provide operational cost-saving services and products that help keep the environment cleaner and the work place safer.

**Thank you for considering our products**



**Sybertech Waste Reduction Ltd.**  
PO Box 3009 - 33191 First Ave.,  
Mission, British Columbia, Canada  
V2V 1G0

**Toll Free Phone: 1-888-888-7975 | [sales@swrl.com](mailto:sales@swrl.com) | [www.swrl.com](http://www.swrl.com)**



**SYBERTECH**  
*Waste Reduction Ltd.*

Toll Free Phone: 1-888-888-7975 | [sales@swrl.com](mailto:sales@swrl.com) | [www.swrl.com](http://www.swrl.com)