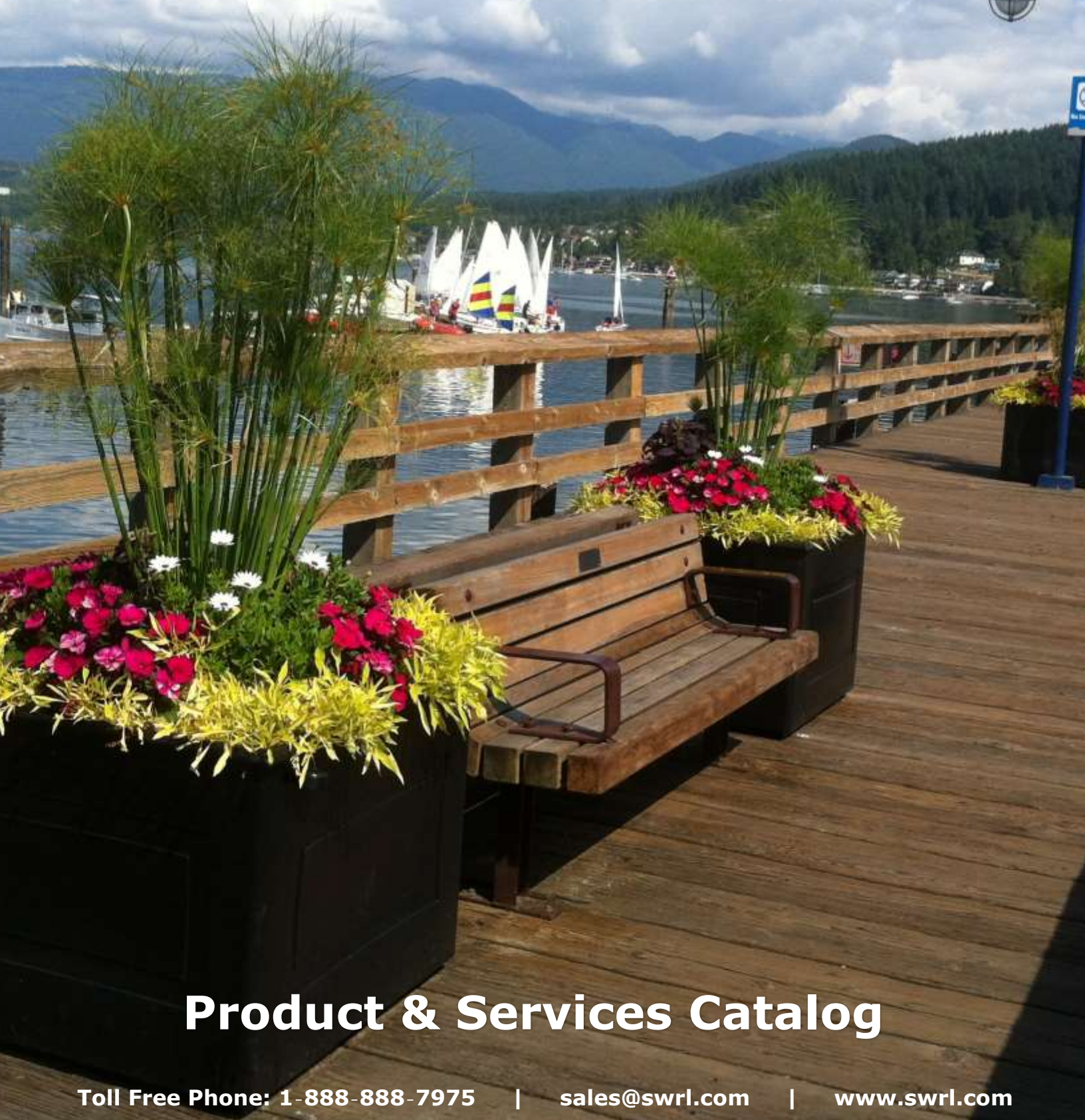




SYBERTECH

Waste Reduction Ltd.



Product & Services Catalog

Toll Free Phone: 1-888-888-7975 | sales@swrl.com | www.swrl.com

Working Together for a Greener, Cleaner & Safer Environment

Sybertech was incorporated in Vancouver, BC and has been in business for over 25 years. We started out in the hazardous waste industry, removing and recycling hazardous waste from a large number of hospitals, schools, cities and industrial clients. Over the years, we have grown and expanded our product lines while always keeping in mind our goals - to promote products designed to reduce operational costs while reducing worker injuries and to contribute to a greener, cleaner and safer environment.

We proudly manufacture two of our main product lines, the [Millennium Series In-Ground Trash Cans](#) and the [Millennium Series Self-Watering Reservoir Planters & Hanging Baskets](#), here in British Columbia. Our ability to coordinate easily with our manufacturing plant means that our clients' needs are always met and our product is reliable and well-made equaling many years of cost/labour saving service.

Another product line that we proudly manufacture in B.C. is our [Dog House Stations and Waste Bags](#). When used in combination with our [Millennium Series Trash Systems](#), this innovative product line will help to keep parks and community spaces healthy and clean while remaining environmentally friendly. This product also helps to reduce risks to staff due to weight lifting and contact with dog waste.

Our sales team travels throughout North America, attending trade shows & conventions and meeting with potential clients to discuss how we can add our Sybertech products to their plans - whether that be a street rejuvenation project or a community garden initiative. Check out our [Reservoir Planters page](#) to see how our planters are being used in bike lane projects, crosswalk applications and school gardening programs. Our [In-Ground Trash Cans](#) are the perfect solution to a number of trash-related issues and also greatly reduce operational costs. We also sell [BigMax Cranes](#) to service our in-ground trash cans, which help to reduce possible staff injuries.

We are also the Canadian Rep for Aircycle / Terracycle and the new [Bulb Eater® 3 & the Bulb Eater® 3L with Intelli Technology](#) which is a fluorescent tube crushing machine. This machine safely crushes the tubes and removes the mercury vapour, drastically cutting the costs of dealing with these fluorescent lights. We also provide a complete service of recycling the waste generated from the Bulb-eater. [Contact us](#) today to learn more.

Sybertech is committed to bringing new and innovative technologies to the public and government to reduce expensive operational cost and provide a cleaner, safer environment.

Sybertech Waste Reduction Ltd.
PO Box 3009 - 33191 First Ave.,
Mission, British Columbia, Canada
V2V 1G0



Contents

Introduction	2
Contents	3-4
Millennium Series In-Ground Trash Cans & Recycling Containers	5
How They Work	6
Why Choose the In-Ground Trash Can System?	7
Available Colors	8
1000 Model / 2000 Model	9
3000 Model	10
4000 Model—Bear Resistant	11
Lid & Access Opening Options	12
Skirting Options	13
Other Options	14
Locking Systems Available	15
Replacement Bags & Lifting Platform Assembly	16
Multi-Can Placement and Blank Lid Use	17
Cranes for Servicing	18
TC Series—Compact Telescopic Mono-Boom Cranes info	19
TC Series Reach and Load Chart	20-21
Crane Options	22

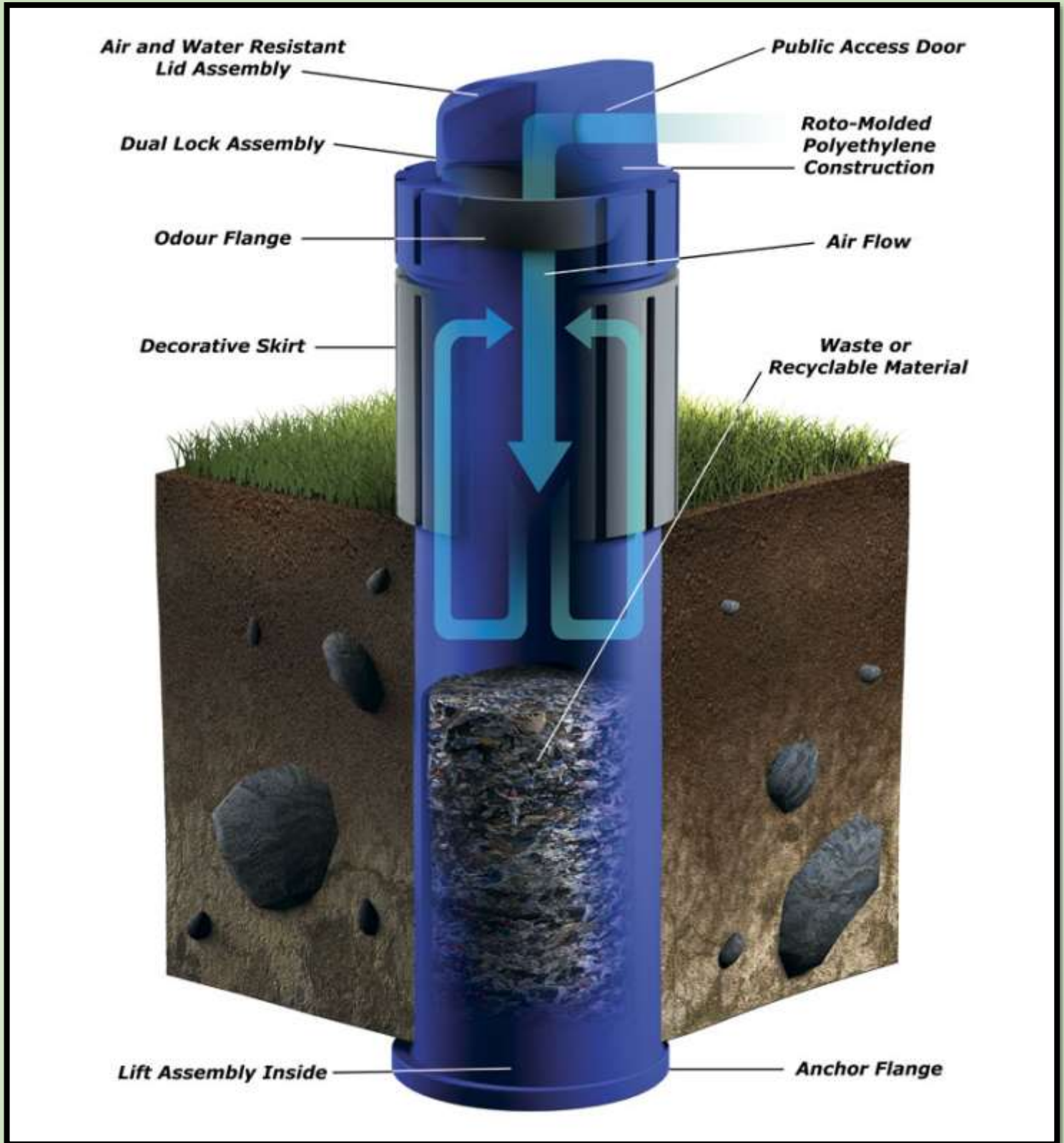
Contents—Continued

Millennium Series Self-Watering Reservoir Planters	23
How They Work & Why Choose Self-Watering Reservoir Planters?	24
Available Designs	25
Available Colors	26
Soil & Water Capacities	27
Protected Bike Lanes & Crosswalk Applications	28
Outdoor Patio Spaces & School/Community Gardens	29
Planter Specification Sheets	30-36
Dog House Stations	37
Waste Bags	38
Get-a-Grips Stainless Steel Stair Treads	39
Get-a-Grip Features	40
EZ Reacher Pick-Up Tools	41
Bulb Eater 3	42-43
Bulb Eater 3L	44-45
Hazardous Waste Removal Services	46
Hazardous Waste Removal Services information	47
Zero Waste Boxes - Nitril & Latex Gloves	48
Zero Waste Boxes - Safety Equipment & Protective Gear / Office Supplies	49
Zero Waste Boxes - Break Room Separation / Coffee Capsules	50
Thank you from SWRL	51



**Millennium Series
In-Ground Trash Cans & Recycling Containers**

How They Work



The **Millennium Series In-Ground Trash Can & Recycling Container system** consists of impermeable cylinders of plastic planted into the ground. Above ground these look like regular trash cans. Inside the cylinder is a single, large, thick plastic bag supported in a lifting harness. Each unit has a capacity far greater than a regular can—3-4 cubic yards of self-compacting trash. Due to this capacity, less frequent emptying is required, as well as, solving a number of trash related issues.

Why Choose the In-Ground Trash Can System?

◆ **Operational Cost Savings—70% Labor Savings**

- ◇ Less frequent pick-up allowing for redeployment of staff time
- ◇ Lessening carbon footprint
- ◇ Reducing vehicle/equipment time and costs

◆ **Reduce Staff Injuries**

- ◇ Emptied with equipment which helps prevent repetitive back injuries and hernias
- ◇ Helps employees avoid physical contact with the waste
- ◇ Helps to prevent employees being stuck by syringes and cut by glass as the bags are lifted with equipment

◆ **Reduce Surface Litter—Once the garbage goes in the can, it stays in the can**

- ◇ Surface litter is greatly reduced as cans never tip over and the lids are locked down tightly
- ◇ Helps reduce residential trash from being placed inside your current containers adding to your waste disposal cost

◆ **Reduce smell**

- ◇ Buried below grade therefore cooled by the ground naturally
- ◇ Waste compacts under its' own weight eliminating oxygen which slows decomposition helping to reduce odors
- ◇ Odor flange deflects smell back into the can
- ◇ 3.5 lb counter-weighted access opening produces positive closure reducing smell even further

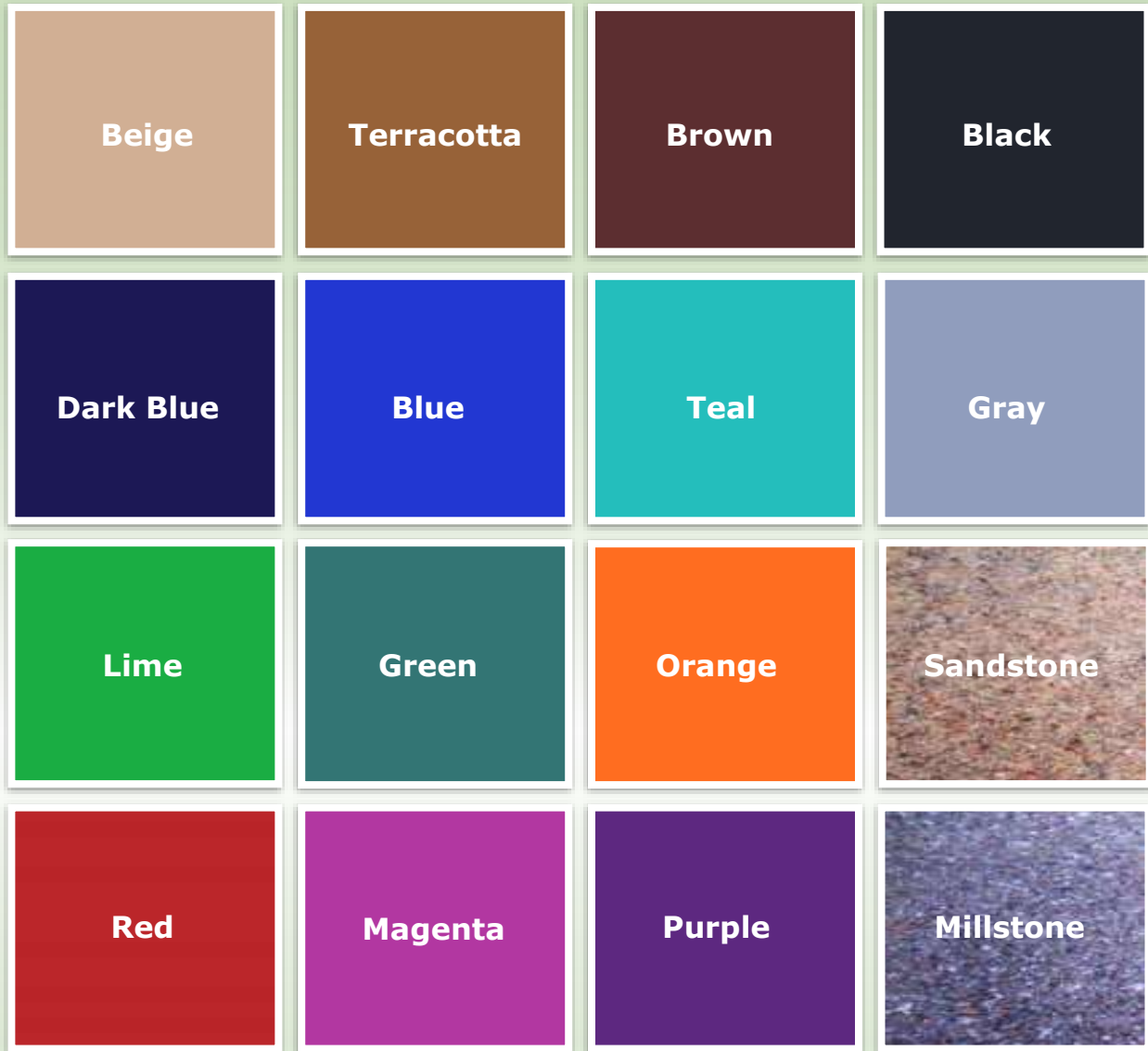
◆ **ADA Compliant—Our cans meet ADA requirements**

- ◇ 3.5 lb counter-weighted access opening

◆ **Key Features**

- ◇ One-piece polyethylene container—no leach in or out
- ◇ All stainless steel hardware
- ◇ Molded-in anchor flange for anti-flotation
- ◇ Self-closing, counter-weighted lid with seal—air & water tight
- ◇ Lifting support rack and web straps included

Millennium Series Available Colors



Custom Colors available upon request—[contact us](#) for more information.



1000 Model - In-Ground Trash Can

- ◆ 54 gallon capacity
- ◆ 55 inches tall and 17 inch diameter
- ◆ Sunk into the ground 19 inches
- ◆ One-piece polyethylene container—no leach in or out
- ◆ Self-closing counterweighted lid with seal—ADA compliant
- ◆ Can use standard bag or full length bag
- ◆ Containers have a single locking system for one padlock to prevent vandalism
- ◆ Poly skirt option available
- ◆ Container has a flange at the bottom to assist with holding the one-piece constructed container in-ground, in frost and high water conditions
- ◆ All stainless steel hardware
- ◆ Standard colors and stone finishes available—custom colors upon request



Product #: 1000-SC / 1000-SF

2000 Model - In-Ground Trash Can

- ◆ 187 gallon capacity
- ◆ 5 feet tall and 30 inch diameter
- ◆ Sunk into the ground 2 feet
- ◆ One-piece polyethylene container—no leach in or out
- ◆ Self-closing counterweighted lid with seal—ADA compliant
- ◆ Uses 8 foot waste bag —1 use only (available in black for trash & clear for recycling)
- ◆ Support rack with web straps for lifting 8 foot waste bag
- ◆ Containers have a dual locking system for two padlocks to prevent vandalism
- ◆ Poly skirt option available
- ◆ Container has a flange at the bottom to assist with holding the one-piece constructed container in-ground, in frost and high water conditions
- ◆ All stainless steel hardware
- ◆ Standard colors and stone finishes available—custom colors upon request



Product #: 2000-SC / 2000-SF

3000 Model - In-Ground Trash Can

- ◆ 300 gallon capacity
- ◆ 8 feet tall and 30 inch diameter with water tight lid
- ◆ Sunk into the ground 5 feet for ease of use for all users—ADA compliant
- ◆ One-piece polyethylene container - no leach in or out - **.375 +/- wall thickness, using 1 shot 136 lb virgin material roto-molding process with 100% Virgin Recyclable Material (zero regrind)** for maximum product strength and integrity. All trimming and cutting components performed by CNC machine producing symmetrical, smooth, uniform finished product
- ◆ Container has odour flange—no smell of trash to attract animals, birds and insects
- ◆ Self-closing counterweighted lid with seal—ADA compliant
- ◆ Uses 10 foot waste bag —1 use only (available in black for trash & clear for recycling)
- ◆ Support rack with **.375" thick lifting platform & web straps** for lifting 10 foot waste bag
- ◆ Containers have **two exclusive to Sybertech keyed locking systems** (patent pending) or a dual locking system for two padlocks to prevent vandalism (cost is the same for either locking system option)
- ◆ Poly skirt option available
- ◆ Container has a flange at the bottom to assist with holding the one-piece constructed container in-ground, in frost and high water conditions—**flange thickness = 3"**
- ◆ All stainless steel hardware
- ◆ Optional Custom Stainless Steel T-Handle for lid opening
- ◆ Standard colors and stone finishes available—custom colors upon request



4000 Model - Bear Resistant In-Ground Trash Can

- ◆ Certified as "Bear Resistant" by the North American Bear Resistant Products Testing Program by withstanding over 60 minutes of black bear contact
- ◆ 300 gallon capacity
- ◆ 8 feet tall and 30 inch diameter with water tight lid
- ◆ Sunk into the ground 5 feet for ease of use for all users—ADA compliant
- ◆ One-piece polyethylene container - no leach in or out - **.375 +/- wall thickness, using 1 shot 136 lb virgin material roto-molding process with 100% Virgin Recyclable Material (zero regrind)** for maximum product strength and integrity. All trimming and cutting components performed by CNC machine producing symmetrical, smooth, uniform finished product
- ◆ Container has odour flange—no smell of trash to attract animals, birds and insects
- ◆ Self-closing counterweighted lid with seal—ADA compliant
- ◆ Uses 10 foot waste bag —1 use only (available in black for trash & clear for recycling)
- ◆ Support rack with **.375" thick lifting platform and web straps** for lifting 10 foot waste bag
- ◆ Containers have **two exclusive to Sybertech keyed locking systems** (patent pending) or a dual locking system for two padlocks to prevent vandalism (cost is the same for either locking system option)
- ◆ Poly skirt included
- ◆ Container has a flange at the bottom to assist with holding the one-piece constructed container in-ground, in frost and high water conditions—**flange thickness = 3"**
- ◆ All stainless steel hardware
- ◆ Standard colors and stone finishes available—custom colors upon request



Product #: 4000-SC / 4000-SF

Lid & Access Opening Options

Product #: 3101-SC NEW / 3101-SF NEW



Access Openings - Available with 5" Round Recycling, 9" Round, 9"X12" Square or Blank

Product #: 3101 SWRL-APO-01



Bear Resistant Access Openings - Available with 5" Round Recycling, 9" Round or 9"X12" Square

Skirting Options

Product #: 5025 SC / 5025 SF



Plastic Skirting—standard colors and stone finishes available—custom colors upon request

Product #: 5023



Steel Skirting—powder coated standard colors available

Other Options

Product #: 5505



Tamper Bar

Product #: 5019



Stainless Steel T-Handle

Product #: 5017



Squirrel Guard

Product #: 5800



Bottles & Cans Recycle Basket

Locking Systems Available



Dual Keyed Locking System



Dual Pad Lock Use System *(Locks not included)

Replacement Bags & Lifting Platform Assembly

Product #: 5500 B—Mill 1000

5501 B or 5501 C—Mill 2000

5503 B or 5502 C—Mill 3000 & Mill 4000



Available in Black for regular trash or Clear for recycling

Mill 1000 Bags - 75 bags per roll

Bag Size: 27.5" x 75"

Mill 2000 Bags - 50 bags per roll

Bag Size: 47.5" x 87"

Mill 3000 & 4000 Bags - 30 bags per roll

Bag Size: 47.5" X 118"

Product #: 2700—Mill 2000 or 3700—Mill 3000



Replacement Lifting Platform and Strap Assembly

Multi-Can Placement & Blank Lid Use



MULTI-CAN PLACEMENT **WITH BLANK LIDS**

- ◆ Install a group of In-Ground Trash Cans in high traffic areas and cap off one lid (or more) with a blank lid.
- ◆ When one can is full, simply swap lids with the blank lid can.
- ◆ Wait until all units are full and then pick them all up at once - efficiently reducing the number of pick-ups.





Cranes for Servicing



BIGMAX cranes are cost effective, durable, and designed with safety in mind. The TC Series telescopic cranes offer superior design and manufacturing at highly competitive prices.

Features:

- ◆ Compact design, requires minimum mounting and stowage space
- ◆ Available in 8 sizes; PTO pump or DC operated
- ◆ Strong, light weight hexagonal boom construction
- ◆ Simple installation as all models have the same mounting bolt pattern
- ◆ Easily serviced with readily available US std hoses and hose ends
- ◆ Hydraulic extensions to 19.5 feet available
- ◆ Safer flange mounted counterbalance valve
- ◆ Rugged, cast steel base with enclosed oil bath slewing gears

There are many applications for using this crane system in addition to pulling the In-Ground Trash Can bags.



BIGMAX Cranes

TC Series

Compact Telescopic Mono-Boom Cranes



Choice

- 20 models from 6,700 to 25,000 ft. lbs.
- Hydraulic extensions to 19.5 feet
- Compact design requires less mounting/stowage space
- Powered by PTO pump or truck battery
- Range of outrigger stabilizers

Strength

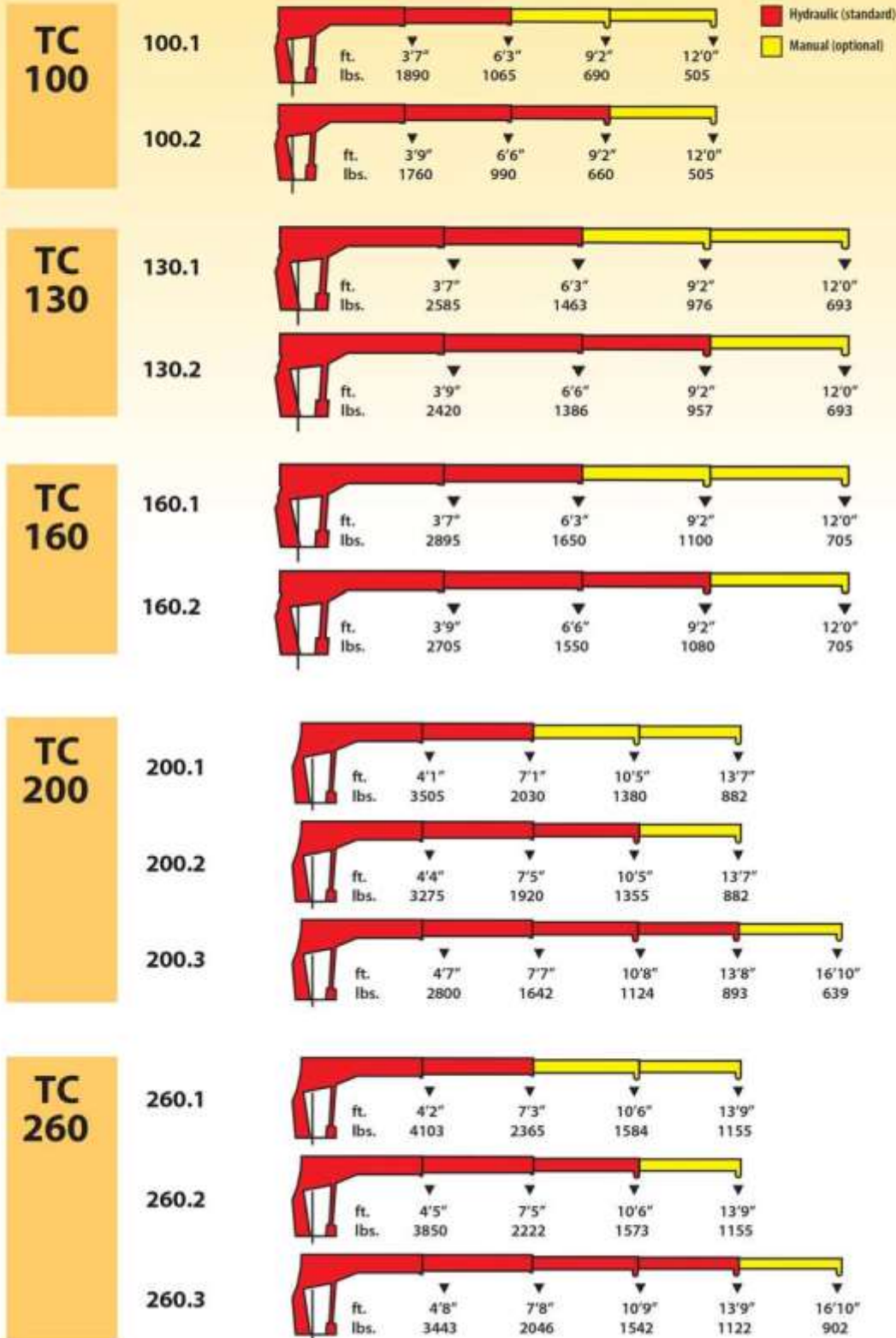
- High tensile steel construction
- Designed for low weight and maximum lift
- Cast steel base with oil bath slewing gears
- Two-year limited warranty

Safety

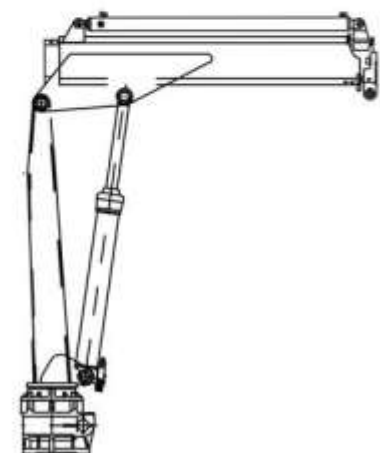
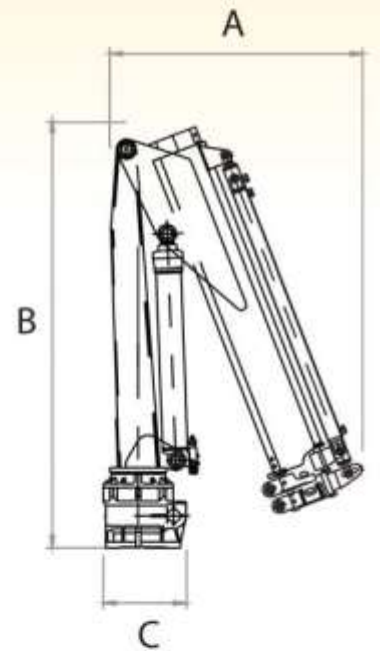
- Active and passive overload protection
- Counterbalance safety valve flange-mounted to main cylinder
- In-cab power shutoff switch on DC models
- Complies with ANSI B 30.5, DIN 15018 and EN12999 Standards



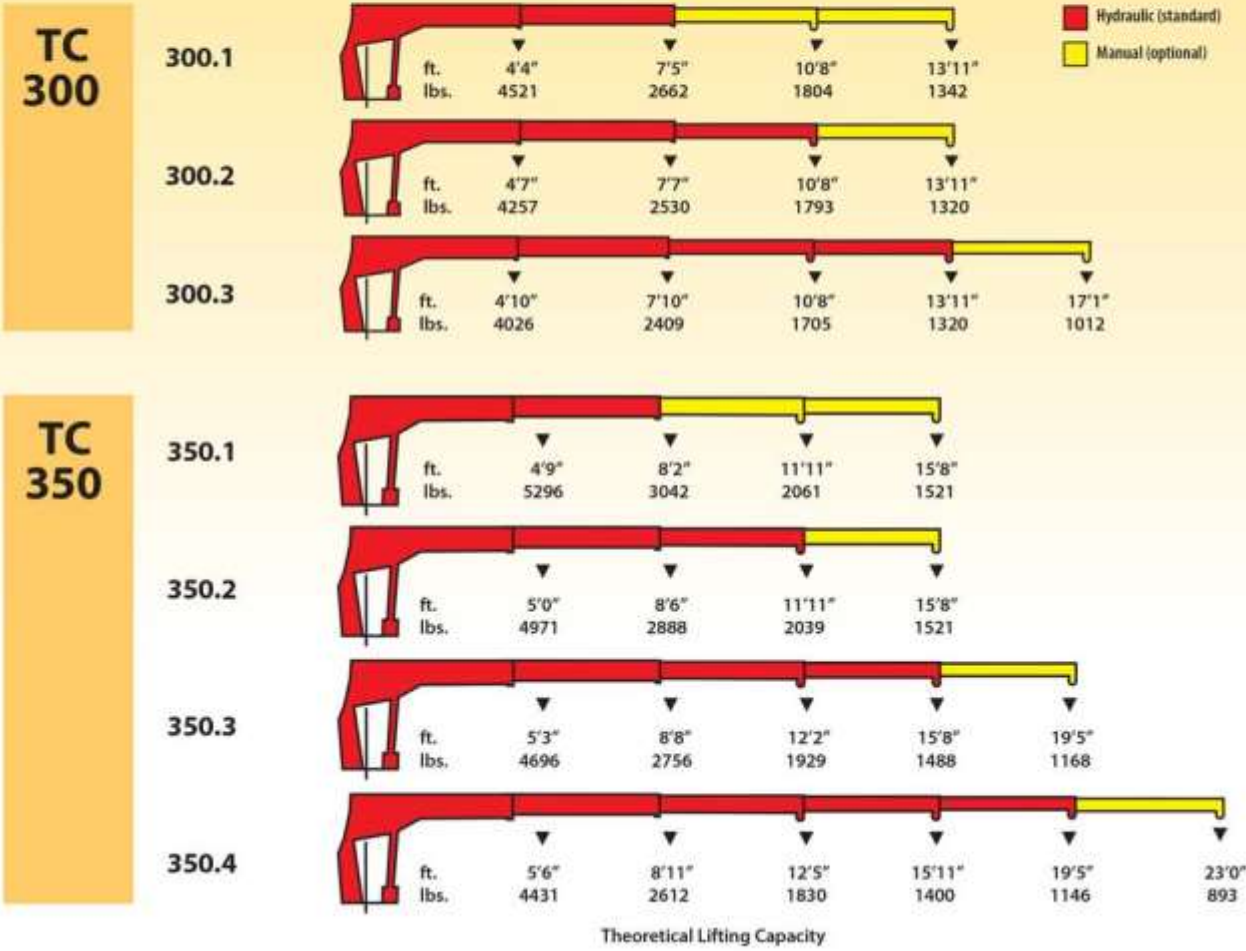
TC Series Reach and Load Chart



MODEL	Dimensions (inches)		
	A	B	C
TC 100	24.6	48.8	11.8
TC 130	31.3	48.9	12.2
TC 160	31.3	48.9	12.2
TC 200	32.0	59.1	11.8
TC 260	33.9	63.0	11.8
TC 300	33.9	63.0	11.8
TC 350	41.0	67.0	13.0



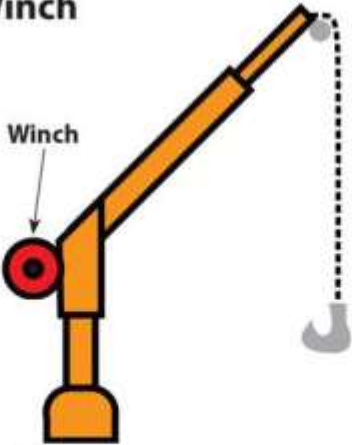
TC Series Reach and Load Chart



TC Blizzard Crane With Winch

TC 100 and TC 130 cranes are available with a heel mounted 800 lb. winch.

TC Blizzard cranes are designed to lift material such as waste bags vertically, close to the column.



CRANE OPTIONS

1. Power Pack: 12 and 24V DC power packs are available when a PTO pump is not available.

2. Crane Mounting Base: to mount the crane directly to the truck frame.

3. Winch: a winch can be installed on most TC models to increase vertical lift capability. Winches are standard on TC Blizzard cranes.

4. Radio/Wireless Controls: hand held or wired controls are available for enhanced safety and convenience.

5. Accessories: rotators, grabs and augers are available for most TC models.

6. Outrigger Stabilizers: are available for all TC Series cranes.



4



2



5



6



3



TC Series – Compact Telescopic Mono-Boom Cranes

SPECIFICATIONS

MODEL	Maximum Lift	Lift Moment (Ft. Lbs.)	Maximum Reach	Base Crane Weight (Lbs.)
TC 100	1,890 lbs	6,710	12'	277-332
TC 130	2,585 lbs	8,800	12'	341-396
TC 160	2,895 lbs	10,250	12'	341-396
TC 200	3,505 lbs	14,430	16'10"	417-530
TC 260	4,103 lbs	17,175	16'10"	497-601
TC 300	4,521 lbs	19,850	17'1"	521-653
TC 350	5,296 lbs	24,900	23'	650-860

BIGMAX CRANES
by Drive Products

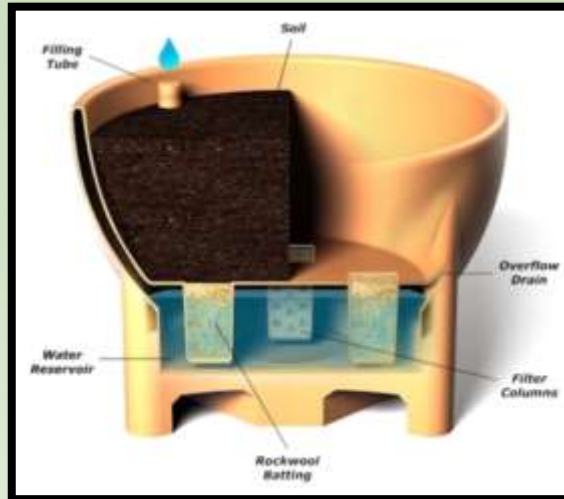
Contact us for a price quote today!

Fast delivery as most models delivered from stock!



**Millennium Series
Self-Watering
Reservoir Planters
& Hanging Baskets**

How They Work



The Millennium series self-watering reservoir planters have a built-in water reservoir. The soil is separated by perforated filter columns which are made to accommodate the included rockwool cubes. The rockwool acts as a filter and a wicking system to deliver the right amount of water to the root zone. The Planters are designed to hold a significant amount of water to reduce the frequency of watering times. Some of our Planters can go up to a month (or more!) without watering, depending on the weather and season. The overflow drain in the reservoir ensures perfect saturation every time, even during heavy rain showers.

Why Choose a Self-Watering Reservoir Planter?

◆ **Operational Cost Savings**

- ◇ Less frequent watering required allowing for redeployment of staff time
- ◇ Lessening carbon footprint
- ◇ Reducing vehicle/equipment time and costs

◆ **Superior Plant Growth**

- ◇ Unique bottom-feeding method employed by all Sybertech planters ensures that plants flourish
- ◇ Plants are never shocked or stressed by over or under watering—they take what they need through capillary action
- ◇ Deep rooting is encouraged because of the lower water table
- ◇ Less weed germination due to a dryer surface area resulting in a cleaner presentation

◆ **Reduce Water Consumption**

- ◇ Up to 80% reduction in water consumption reported by satisfied Sybertech customers
- ◇ Under some growing conditions, some planters only need to be filled once per month!
- ◇ Large reservoirs protect the plants from drought in addition to reducing watering time
- ◇ Overflow drain ensures that soil is never over-saturated

◆ **Key Features**

- ◇ Built-in filler tube with tethered cap to reduce vandalism
- ◇ All Sybertech Planters have forklift/strap slots on the bottom for ease of movement/relocation
- ◇ Stainless Steel Chain and Hardware on Hanging Baskets
- ◇ Rockwool Wicking material is provided with each planter

Available Designs



Sconce Planter

D: 24" W: 13" H: 16.25"
4.1 US Gallons / 15.52 L
0.56 Cubic Feet of Soil



Conical Planter

D: 33" H: 24"
13.2 US Gallons / 49.9 L
3.25 Cubic Feet of Soil



Hanging Bowl Shaped Planters

D: 20" H: 9" / 6.85 L
D: 24" H: 12" / 10.24 L
20"=0.5 Cubic Feet of Soil
24"=1.3 Cubic Feet of Soil



Round End Planter

L: 48" W: 20" H: 23"
19.67 US Gallons / 74.4 L
4.0 Cubic Feet of Soil



Flat End Planter

L: 48" W: 20" H: 23"
21 US Gallons / 79.49 L
4.00 Cubic Feet of Soil



Bowl Planter

D: 36" H: 23.6"
13.91 US Gallons / 52.6 L
5.5 Cubic Feet of Soil



20 Inch Square Planter

L: 20" W: 20" H: 23"
7.4 US Gallons / 28 L
1.03 Cubic Feet of Soil



Square Planter

L: 34" W: 34" H: 26"
41.28 US Gallons / 156 L
6.40 Cubic Feet of Soil



Rectangular Planter

L: 54" W: 26" H: 21"
50.14 US Gallons/189.91 L
8.60 Cubic Feet of Soil



Round Planters

D: 30" H: 20"/ 95.56 L
D: 36" H: 24"/ 137.61 L
D: 42" H: 30"/187.3 L



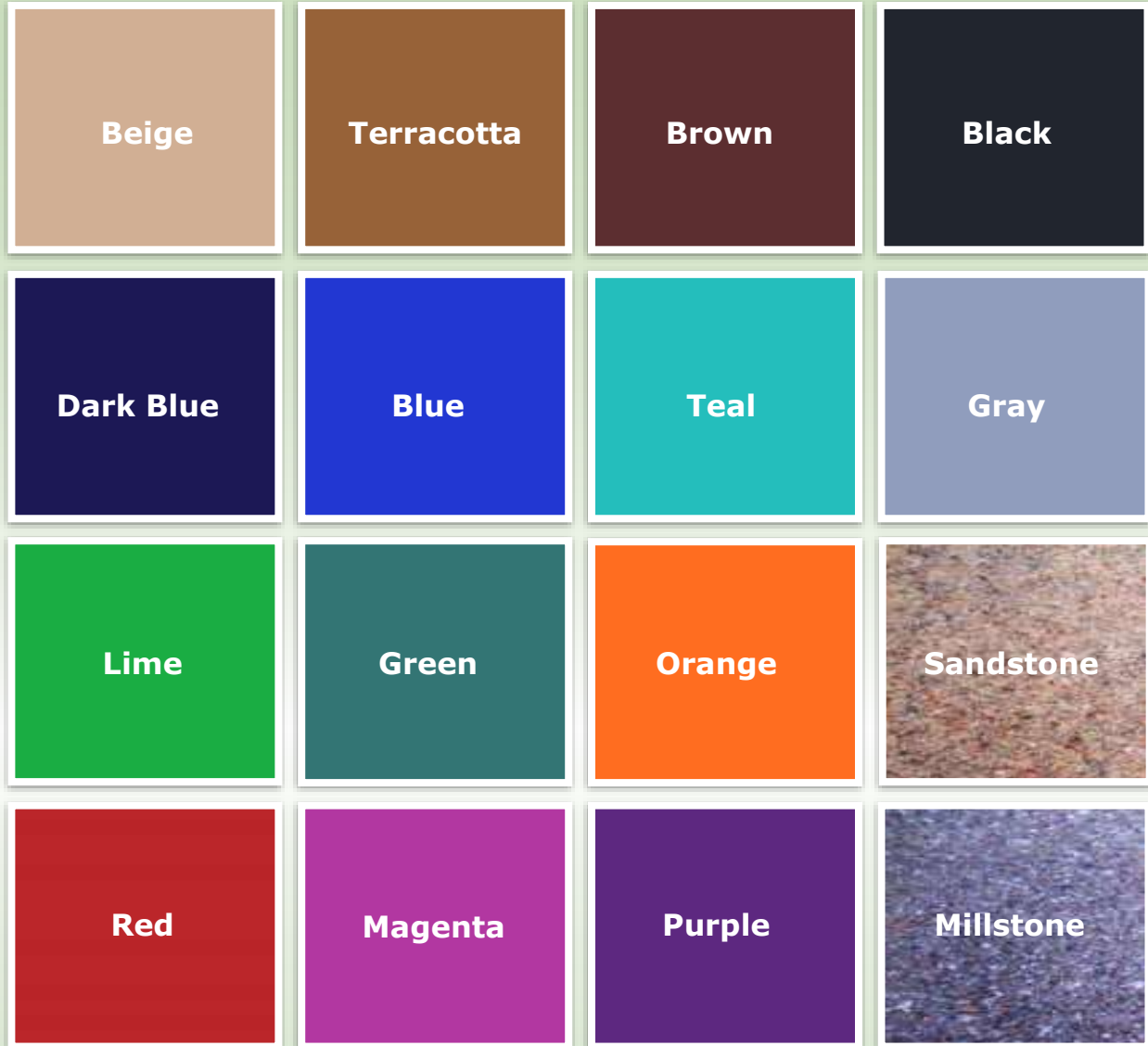
Divider Planter

L: 48.7" W: 17.8" H: 22"
9.72 US Gallons / 36.79 L
2.40 Cubic Feet of Soil

The Millennium Series Self-Watering Reservoir Planters employ a unique bottom feeding method resulting in a vibrant, healthy and colorful display of plants and flowers.

Dramatically reduce your Operational Costs while also reducing water consumption and your carbon footprint.

Millennium Series Available Colors



Custom Colors available upon request—[contact us](#) for more information.



Soil & Water Capacities

Planter Style & Size	Soil Capacity in Cubic Feet	Water Capacity in U.S. Gallons	Water Capacity in Litres
Round – 30 inch	3.82	25.25	95.55
Round – 36 inch	7.50	36.35	137.60
Round – 42 inch	13.90	49.50	187.30
Square – 34 inch	6.40	41.30	156.00
Conical – 33 inch	3.25	13.20	49.90
Rectangular – 54 inch	8.60	50.15	189.80
Divider Planter – 48 inch	2.40	9.72	36.79
Hanging Basket – 24 inch	1.30	2.70	10.25
Hanging Basket – 20 inch	0.50	1.80	6.85
Sconce Planter	0.56	4.10	15.52
Bowl Planter	5.50	13.90	52.62
Flat End Planter	4.00	21.00	79.49
Round End Planter	4.00	19.67	74.46
20 Inch Square Planter	1.03	7.4	28

What is the best soil mixture to use in a Sybertech Self-Watering Reservoir Planter?

Depending on your type of crop, some plants will require richer blends or flowering blends. What you want to avoid is a mix that has too much peat, coco or vermiculite since they have poor water retention qualities. Also to be avoided, very rich or heavy blends of soil that contain clay since the water retention is too great.

We recommend a 50/50 blend of peat or coco along with a good quality soil (crop specific) which will provide both nutrients and water drainage to your root zone.

Protected Bike Lanes & Crosswalk Applications



Sybertech planters aid in the safety of everyone by providing a significant barrier along Protected Bike Lanes and in Crosswalk Applications. They add color and beauty while helping to ensure that everyone feels more confident as they share the roadways.

Outdoor Patio Spaces & School/Community Gardens



Sybertech planters are a great addition to any outdoor patio/parklet spaces. They have also been utilized by many schools and community gardens as the unique bottom-feeding method employed by all Sybertech planters means that all plants and flowers thrive.

Sconce Self-Watering Reservoir Planter

- ◆ 24" Diameter 16.25" Height 13" Width
 - ◆ Water Reservoir Capacity of 15.15 Litres or 4 US Gallons
 - ◆ 0.50 Cubic Feet of Soil
 - ◆ One-piece 1 shot roto-mould construction using UV protected Virgin polyethylene for superior strength, durability and life expectancy
 - ◆ Soil depth 7"
 - ◆ 2 filter columns to deliver water to soil
 - ◆ Overflow Drain
 - ◆ Cleanout access for reservoir
 - ◆ Comes with 4 pieces of rock wool for filter columns
 - ◆ Planter weight unfilled: 4.31 kgs / 9.5 lbs
 - ◆ Planter weight filled: 24 kgs / 52.9 lbs
- *Weights may vary depending on soil/plants used



Product #:
6025WS-SC / 6026WS-SF

33" Conical Self-Watering Reservoir Planter

- ◆ 33" Diameter 24" Height
 - ◆ Water Reservoir Capacity of 49.9 Litres or 13.2 US Gallons
 - ◆ 3.25 Cubic Feet of Soil
 - ◆ One-piece 1 shot roto-mould construction using UV protected Virgin polyethylene for superior strength, durability and life expectancy
 - ◆ Soil depth 13.6"
 - ◆ New molded-in filler tube with tethered cap to reduce vandalism
 - ◆ Forklift/strap slots for ease of movement/relocation
 - ◆ 4 filter columns to deliver water to soil
 - ◆ Overflow Drain
 - ◆ Cleanout access for reservoir
 - ◆ Comes with 12 pieces of rock wool for filter columns
 - ◆ Planter weight unfilled: 16.8 kgs / 37 lbs
 - ◆ Planter weight filled: 96.2 kgs / 212 lbs
- *Weights may vary depending on soil/plants used



Product #:
6033CO-SC / 6033CO-SF

20" Hanging Basket Self-Watering Reservoir Planter

- ◆ 20" Diameter x 9" Height
 - ◆ Water Reservoir Capacity of 6.85 Litres or 1.8 US Gallons
 - ◆ 0.50 Cubic Feet of Soil
 - ◆ One-piece 1 shot roto-mould construction using UV protected Virgin polyethylene for superior strength, durability and life expectancy
 - ◆ Soil depth 6 9/16"
 - ◆ Stainless Steel Chain and Hardware
 - ◆ 3 filter columns to deliver water to soil
 - ◆ Overflow Drain
 - ◆ Cleanout access for reservoir
 - ◆ Comes with 3 pieces of rock wool for filter columns
 - ◆ Planter weight unfilled: 3.28 kgs / 7.25 lbs
 - ◆ Planter weight filled: 14.67 kgs / 32.35 lbs
- *Weights may vary depending on soil/plants used



Product #:
6020HP-SC /6020HP-SF



24" Hanging Basket Self-Watering Reservoir Planter

- ◆ 24" Diameter x 12" Height
 - ◆ Water Reservoir Capacity of 10.24 Litres or 2.7 US Gallons
 - ◆ 1.30 Cubic Feet of Soil
 - ◆ One-piece 1 shot roto-mould construction using UV protected Virgin polyethylene for superior strength, durability and life expectancy
 - ◆ Soil depth 8 7/16"
 - ◆ Stainless Steel Chain and Hardware
 - ◆ 3 filter columns to deliver water to soil
 - ◆ Overflow Drain
 - ◆ Cleanout access for reservoir
 - ◆ Comes with 3 pieces of rock wool for filter columns
 - ◆ Planter weight unfilled: 4.99 kgs / 11 lbs
 - ◆ Planter weight filled: 27.02 kgs / 59.57 lbs
- *Weights may vary depending on soil/plants used



Product #:
6024HP-SC /6024HP-SF



48" Round End Self-Watering Reservoir Planter

- ◆ 48"L x 20"W x 23"H
- ◆ Water Reservoir Capacity of 74.46 Litres or 19.67 US Gallons
- ◆ 3.72 Cubic Feet of Soil
- ◆ One-piece 1 shot roto-mould construction using UV protected Virgin polyethylene for superior strength, durability and life expectancy
- ◆ Soil depth 13"
- ◆ New molded-in filler tube with tethered cap to reduce vandalism
- ◆ Forklift/strap slots for ease of movement/relocation
- ◆ 3 filter columns to deliver water to soil
- ◆ Overflow Drain
- ◆ Cleanout access for reservoir
- ◆ Comes with 9 pieces of rock wool for filter columns
- ◆ Planter weight unfilled: 21.8 kgs / 48 lbs
- ◆ Planter weight filled: 130 kgs / 286.5 lbs

*Weights may vary depending on soil/plants used



Product #:
6049RR-SC / 6049RR-SF



48" Flat End Self-Watering Reservoir Planter

- ◆ 48"L x 20"W x 23"H
- ◆ Water Reservoir Capacity of 79.49 Litres or 21.04 US Gallons
- ◆ 3.96 Cubic Feet of Soil
- ◆ Soil depth 13"
- ◆ One-piece 1 shot roto-mould construction using UV protected Virgin polyethylene for superior strength, durability and life expectancy
- ◆ New molded-in filler tube with tethered cap to reduce vandalism
- ◆ Forklift/strap slots for ease of movement/relocation
- ◆ 3 filter columns to deliver water to soil
- ◆ Overflow Drain
- ◆ Cleanout access for reservoir
- ◆ Comes with 9 pieces of rock wool for filter columns
- ◆ Planter weight unfilled: 24.5 kgs / 54 lbs
- ◆ Planter weight filled: 139.9 kgs / 308.44 lbs

*Weights may vary depending on soil/plants used



Product #:
6050RF-SC / 6050RF-SF



36" Bowl Self-Watering Reservoir Planter

- ◆ 36" Diameter 23.6" Height
- ◆ Water Reservoir Capacity of 52.62 Litres or 13.91 US Gallons
- ◆ 5.5 Cubic Feet of Soil
- ◆ One-piece 1 shot roto-mould construction using UV protected Virgin polyethylene for superior strength, durability and life expectancy
- ◆ Soil depth 14"
- ◆ New molded-in filler tube with tethered cap to reduce vandalism
- ◆ Forklift/strap slots for ease of movement/relocation
- ◆ 4 filter columns to deliver water to soil
- ◆ Overflow Drain
- ◆ Cleanout access for reservoir
- ◆ Comes with 12 pieces of rock wool for filter columns
- ◆ Planter weight unfilled: 20.64 kgs / 45.5 lbs
- ◆ Planter weight filled: 123.3 kgs / 271.5 lbs

*Weights may vary depending on soil/plants used



Product #:
6037BO-SC / 6037BO-SF



20" Square Self-Watering Reservoir Planter

- ◆ 20"L x 20"W x 23"H
- ◆ Water Reservoir Capacity of 28 Litres or 7.4 US Gallons
- ◆ 1.03 Cubic Feet of Soil
- ◆ One-piece 1 shot roto-mould construction using UV protected Virgin polyethylene for superior strength, durability and life expectancy
- ◆ Soil depth 13.6"
- ◆ New molded-in filler tube with tethered cap to reduce vandalism
- ◆ 1 filter cone to deliver water to soil
- ◆ Overflow Drain
- ◆ Cleanout access for reservoir
- ◆ Comes with 3 pieces of rock wool for filter cone
- ◆ Planter weight unfilled: 8.16 kgs / 18 lbs
- ◆ Planter weight filled: 45.5 kgs / 100.3 lbs

*Weights may vary depending on soil/plants used



Product #:
6020SQ-SC / 6020SQ-SF



34" Square Self-Watering Reservoir Planter

- ◆ 34"L x 34"W x 26"H
- ◆ Water Reservoir Capacity of 156 Litres or 41.28 US Gallons
- ◆ 6.40 Cubic Feet of Soil
- ◆ One-piece 1 shot roto-mould construction using UV protected Virgin polyethylene for superior strength, durability and life expectancy
- ◆ Soil depth 13.6"
- ◆ New molded-in filler tube with tethered cap to reduce vandalism
- ◆ Forklift/strap slots for ease of movement/relocation
- ◆ 4 filter columns to deliver water to soil
- ◆ Overflow Drain
- ◆ Cleanout access for reservoir
- ◆ Comes with 12 pieces of rock wool for filter columns
- ◆ Planter weight unfilled: 28.1 kgs / 62 lbs
- ◆ Planter weight filled: 242.2 kgs / 533.9 lbs
*Weights may vary depending on soil/plants used



Product #:
6034SQ-SC / 6034SQ-SF



54" Rectangular Self-Watering Reservoir Planter

- ◆ 54"L x 26"W x 21"H
- ◆ Water Reservoir Capacity of 189.80 Litres or 50.15 US Gallons
- ◆ 8.6 Cubic Feet of Soil
- ◆ One-piece 1 shot roto-mould construction using UV protected Virgin polyethylene for superior strength, durability and life expectancy
- ◆ Soil depth 13.6"
- ◆ New molded-in filler tube with tethered cap to reduce vandalism
- ◆ Forklift/strap slots for ease of movement/relocation
- ◆ 6 filter columns to deliver water to soil
- ◆ Overflow Drain
- ◆ Cleanout access for reservoir
- ◆ Comes with 18 pieces of rock wool for filter columns
- ◆ Planter weight unfilled: 25.4 kgs / 56 lbs
- ◆ Planter weight filled: 292.8 kgs / 645.6 lbs
*Weights may vary depending on soil/plants used



Product #:
6054RE-SC / 6054RE-SF



30" Round Self-Watering Reservoir Planter

- ◆ 30" D X 20" H
- ◆ Water Reservoir Capacity of 95.56 Litres or 25.24 US Gallons
- ◆ 3.82 Cubic Feet of Soil
- ◆ One-piece 1 shot roto-mould construction using UV protected Virgin polyethylene for superior strength, durability and life expectancy
- ◆ Soil depth 13"
- ◆ New molded-in filler tube with tethered cap to reduce vandalism
- ◆ Forklift/strap slots for ease of movement/relocation
- ◆ 4 filter columns to deliver water to soil
- ◆ Overflow Drain
- ◆ Cleanout access for reservoir
- ◆ Comes with 12 pieces of rock wool for filter columns
- ◆ Planter weight unfilled: 13.15 kgs / 29 lbs
- ◆ Planter weight filled: 143.15 kgs / 315.6 lbs

*Weights may vary depending on soil/plants used



Product #:

6030RO-SC / 6030RO-SF



36" Round Self-Watering Reservoir Planter

- ◆ 36" D X 24" H
- ◆ Water Reservoir Capacity of 137.60 Litres or 36.35 US Gallons
- ◆ 7.50 Cubic Feet of Soil
- ◆ One-piece 1 shot roto-mould construction using UV protected Virgin polyethylene for superior strength, durability and life expectancy
- ◆ Soil depth 13"
- ◆ New molded-in filler tube with tethered cap to reduce vandalism
- ◆ Forklift/strap slots for ease of movement/relocation
- ◆ 4 filter columns to deliver water to soil
- ◆ Overflow Drain
- ◆ Cleanout access for reservoir
- ◆ Comes with 12 pieces of rock wool for filter columns
- ◆ Planter weight unfilled: 20.86 kgs / 46 lbs
- ◆ Planter weight filled: 226.2 kgs / 498.7 lbs

*Weights may vary depending on soil/plants used



Product #:

6036RO-SC / 6036RO-SF



42" Round Self-Watering Reservoir Planter

- ◆ 42" D X 30" H
- ◆ Water Reservoir Capacity of 187.3 Litres or 49.48 US Gallons
- ◆ 13.9 Cubic Feet of Soil
- ◆ One-piece 1 shot roto-mould construction using UV protected Virgin polyethylene for superior strength, durability and life expectancy
- ◆ Soil depth 14"
- ◆ New molded-in filler tube with tethered cap to reduce vandalism
- ◆ Forklift/strap slots for ease of movement/relocation
- ◆ 4 filter columns to deliver water to soil
- ◆ Overflow Drain
- ◆ Cleanout access for reservoir
- ◆ Comes with 18 pieces of rock wool for filter columns
- ◆ Planter weight unfilled: 31.3 kgs / 69 lbs
- ◆ Planter weight filled: 344.3 kgs / 759.1 lbs
*Weights may vary depending on soil/plants used



Product #:
6042RO-SC / 6042RO-SF



48" Divider Self-Watering Reservoir Planter

- ◆ 48.7"L x 17.8"W x 22"H
- ◆ Water Reservoir Capacity of 36.79 Litres or 9.72 US Gallons
- ◆ 2.40 Cubic Feet of Soil
- ◆ One-piece 1 shot roto-mould construction using UV protected Virgin polyethylene for superior strength, durability and life expectancy
- ◆ Soil depth 13.6"
- ◆ New molded-in filler tube with tethered cap to reduce vandalism
- ◆ 4 filter columns to deliver water to soil
- ◆ Overflow Drain
- ◆ Cleanout access for reservoir
- ◆ Comes with 12 pieces of rock wool for filter columns
- ◆ Planter weight unfilled: 21.55 kgs / 47.5 lbs
- ◆ Planter weight filled: 80.1 kgs / 176.6 lbs
*Weights may vary depending on soil/plants used



Product #:
6048DV-SC / 6048DV-SF



Dog House Stations & Waste Bags



- ◆ Two Dog House designs available: Front-Pull and Bottom-Pull
- ◆ Dog House Stations are made with powder-coated aluminum
- ◆ 2-piece construction for use with a padlock
- ◆ Bags are made in North America from 100% recyclable materials – in the presence of oxygen, microorganisms and moisture, the bag will first degrade, then biodegrade to carbon dioxide, water and non-toxic biomass (humus) *as described in ASTM D6954-04.
- ◆ Ideal for dog parks, community trails, recreation and sports fields, beaches, hotels, university campuses and much more!
- ◆ Customizable printing available

Product #: 90ST-6

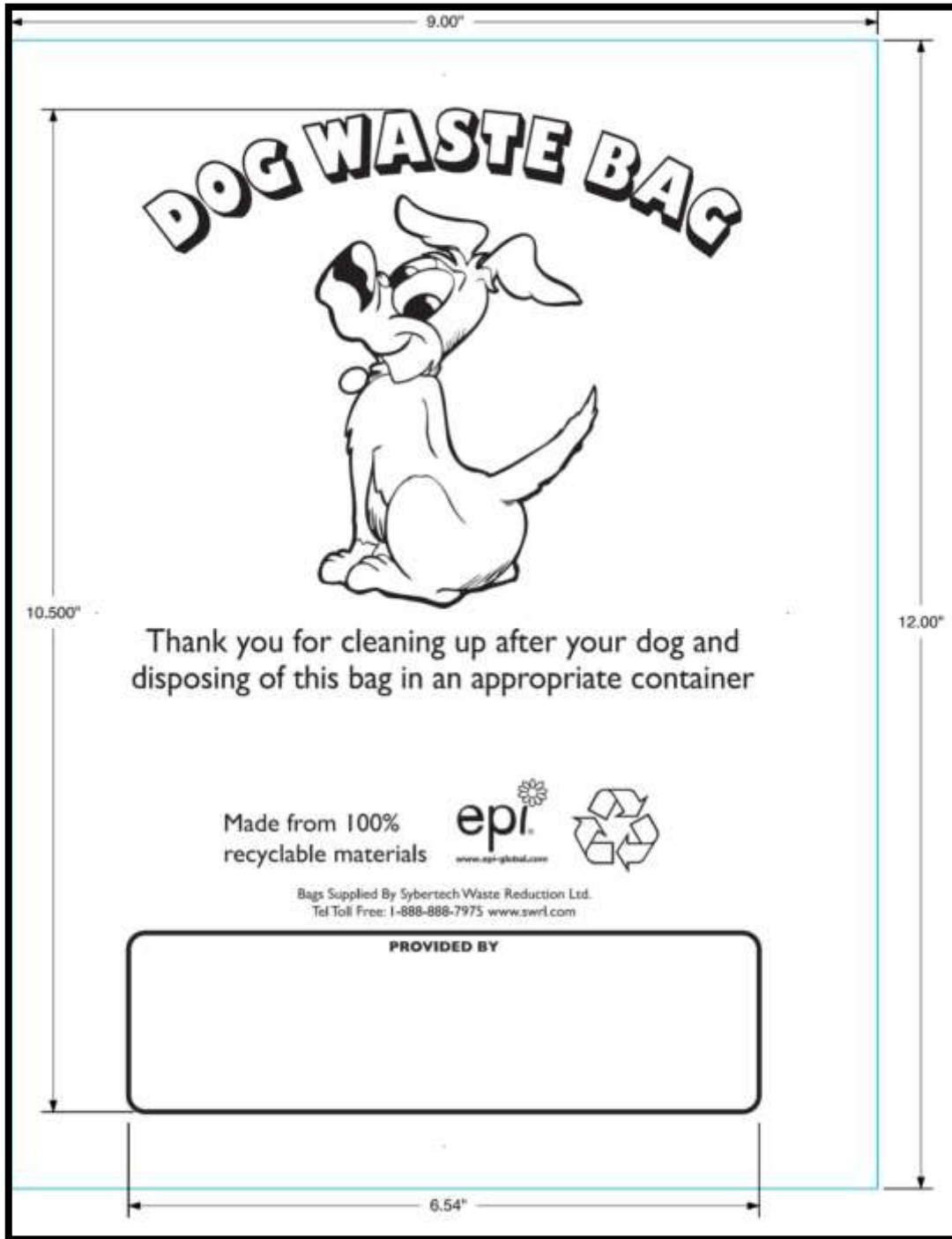


Standard Dog Waste Bag Dispenser
Bottom Pull Style - Holds 1 case of
1000 bags

Product #: 90ST-13



Large Dog Waste Bag Dispenser
Front Pull Style - holds bundles of 250
Bags Stapled Pack



- ◆ Bags are made in North America from 100% recyclable materials – in the presence of oxygen, microorganisms and moisture, the bag will first degrade, then biodegrade to carbon dioxide, water and non-toxic biomass (humus) *as described in ASTM D6954-04.
- ◆ Customizable printing available

Product #: 90ST-8

Dog Waste Bags standard printed

9 x 12 Biodegradable

1000 per Box for use with dispenser 90ST-6

Product #: 90ST-12

Large Dog Waste standard printed—Biodegradable 9.75 x 12 + 1.5" lip – 1 mil White Poly Bag Printed, 1 color/1side

5" centre holes, staple pack, 250 bags /bundle

2000 bags/case for use with dispenser 90ST-13



Get-a-Grip Stainless Steel Stair Treads

Get-a-Grip™ Stainless Steel Stair Treads are great for all kinds of safety applications, including stairs, wood decks, ramps, marinas and wharfs. They can be applied to any wooden surface, including treated wood. They are also compatible with brushed concrete (requires an additional procedure).

Get-a-Grip™ stair treads meet Building code requirements under wet conditions:
Section 7.2.7 Slip Resistance Test of: · CAN/CGSB-75.1-M88 · ASTM C1028-07



- ◆ Installs easily in minutes
- ◆ Made completely of stainless steel
- ◆ Helps to prevent slips and falls (2nd highest accidental death, next to cars)
- ◆ Great for curves and angles
- ◆ Will not corrode or discolour
- ◆ Light reflective for those dark foot paths
- ◆ Removable and reusable
- ◆ Barefoot friendly and Pet friendly
- ◆ Size: 2 x 24 inches - 6 pieces per box





The **Arcoa e-Z Reacher®** is the heavy duty helper at home, in the garden or on the job. With this innovative tool, everything is within reach without stretching, straining or bending. Easily pick up trash and debris, and keep your hands away from unsanitary items. Your customers will work more quickly, safely and efficiently with the e-Z Reacher®—the original rubber cup reacher!

Product Features

- ◆ No bending, stretching, or straining, so it's easy on your back, knees and hands
- ◆ Retrieving hard-to-reach items is a snap because the E-Z Reacher comes in 32", 40" and 48" lengths
- ◆ With the versatile E-Z Reacher, you can pick up objects as small as a dime or as heavy as a five-pound brick
- ◆ The durable E-Z Reacher's replaceable rubber cups are easy to clean, and it's made of lightweight aluminum that won't rust



BULB EATER® 3

with Intelli Technology

The safe, efficient way to recycle fluorescent lamps.

The Bulb Eater® 3 system not only crushes spent fluorescent lamps of any length, u-tubes, and CFL's into 100% recyclable material, but it also captures over 99.99% of the vapors released! The system, which is mounted to a 55-gallon drum, can hold up to 1350 4' fluorescent lamps. A five-stage filtering process removes hazardous particulates and vapors. A recent study showed non-detectable levels of emitted mercury vapor even after crushing 1700 lamps. A digital control panel gives the operator added security by monitoring various aspects of the machine to better ensure operator safety.

In addition to providing OSHA and ACGIH compliance, the Bulb Eater® 3 frees up valuable storage space normally filled with boxes of spent intact lamps, reduces handling and related labor costs, and typically cuts recycling costs by 50% or more.

Onboard controls with *Intelli Technology*

- Multiple sensing points that assist with machine diagnostics and maintenance/filter change-outs.

1. Powerful DC motor crushes lamps from 1' to 8' long in less than one second!
2. Removable entry tubes accommodate all lengths and diameters of linear lamps. Lower angle and entry height improve operator comfort.
3. Digital control panel with LCD display and self-diagnostic fault codes.
4. Removable CFL/U-tube chute allows for any size of fluorescent lamps (sold separately).
5. New 5-Stage Filter System
 - Cyclone separator filters most of the particles back into the drum.
 - Upgraded cartridge filter catches any fine particles (2nd stage).
 - Dual-action, replaceable HEPA filter removes particulates (3rd & 5th stage).
 - 4th stage Activated Carbon filter captures and neutralizes mercury vapors released during the controlled crushing of lamps.
6. 55-gallon drum (sold separately) will hold approximately 1,350 4' T8 crushed lamps to reduce storage requirements and handling prior to recycling.



Request Quote Today!

1-888-888-7975

The Bulb Eater® was named a "Money Saving Product for 2012" by Buildings Magazine.

Machine Benefits



Eliminate storage hassles - Reduce your needed storage space for lamps by crushing 1350 T8 4' lamps per 55-gallon drum.

Reduce handling - Handle your spent bulbs once. Simply roll your Bulb Eater[®] lamp crushing system on a 55-gallon drum dolly (sold separately) to the work area or into a storage area. Save roughly 20 hours of labor per 1000 lamps by crushing rather than boxing the lamps!

Safer work environment - EPA studies show an estimated 2-3% accidental breakage rate while boxing lamps prior to pick-up. The 0.001% emission rate from the Bulb Eater[®] lamp crushing system provides for less mercury vapor emission. Your workers are not only safer, but your liability is reduced!

Cut costs - By pre-crushing the lamps, facilities are able to save money on their lamp recycling costs. Savings are typically anywhere from a dime to \$1 per lamp!

Nationwide recycling program - Enjoy competitive rates for lamp recycling. Fully permitted trucks are used for transportation and Certificates of Recycling are provided once the lamps are recycled.

The Bulb Eater[®] 3 Specifications

FEED RATE	30 lamps per minute (Operator's speed may vary)		
CRUSHED LAMP CAPACITY <small>*Approximate; individual experience may vary</small>	1500	4' T5 Straight Lamps (0.625" diameter) per drum	
	1350	4' T8 Straight Lamps (1.0" diameter) per drum	
	875	4' T12 Straight Lamps (1.5" diameter) per drum	
	300	4' T17 Straight Lamps (2.0" diameter) per drum	
	400	8' T12 Straight Lamps (1.5" diameter) per drum	
	550	4' T12 U-tube Lamps (1.5" diameter) per drum	
FILTRATION <small>¹ Air Sampling for Mercury Vapor and Particulates, As tested by Bureau Veritas (N.A.) on June 10th, 2013; Results based upon crushing 1700 T12 4' fluorescent lamps and changing the drums out twice in a warehouse and small office with normal ventilation.</small>	Exposure In Operator's Breathing Zone		All air sample results collected during assessment were below the limits of analytical detection, and less than the OSHA PEL (0.1 mg/m ³) and the ACGIH TLV (0.1 mg/m ³)
		High Capacity Cartridge Filter (Approximate life: 6 drums)	1 micron @ 99% particle retention
		H.E.P.A. Filter (Approximate life: 12 drums)	.3 micron @ 99.99% particle retention (Exceeds H.E.P.A. standard @ 99.97%)
		Activated Carbon Filter (1500 hrs. running time)	Calculated life of approximately 1 million lamps
CONTROL PANEL		Control Panel with a Digital LCD Display with <i>Intelli Technology</i>	LCD Display for indicating which mode the machine is in and any defaults that might occur. Additional measuring points that assist with machine diagnostics and maintenance/filter change outs. Emergency stop button, start/stop button.
VACUUM MOTOR	500 watts - 120v		
	1/5 h.p. - 2 amp - 120v		

The Bulb Eater[®] was awarded "Top 100 Product" by Buildings Magazine!

Call Today!

1-888-888-7975

Sybertech Waste Reduction Ltd.

BULB EATER® 3L

with Intelli Technology®

The safe, efficient way to recycle fluorescent lamps.

The Bulb Eater® 3L system not only crushes spent fluorescent lamps of any length, u-tubes, and CFL's into 100% recyclable material, but it also captures over 99.99% of the vapors released! The system, which is mounted to a 55-gallon drum, can hold up to 1350 4' fluorescent lamps. A four-stage filtering process removes hazardous particulates and vapors. A recent study showed non-detectable levels of emitted mercury vapor even after crushing 1700 lamps. A digital control panel gives the operator added security by monitoring various aspects of the machine to better ensure operator safety.

In addition to providing OSHA and ACGIH compliance, the Bulb Eater® 3L frees up valuable storage space normally filled with boxes of spent intact lamps, reduces handling and related labor costs, and typically cuts recycling costs by 50% or more.

Onboard controls with *Intelli Technology*®

- Multiple sensing points that assist with machine diagnostics and maintenance/filter change-outs.

1. Powerful DC motor crushes lamps from 1' to 8' long in less than one second!
2. Removable entry tubes accommodate all lengths and diameters of linear lamps. Lower angle and entry height improve operator comfort.
3. Digital control panel with LCD display and self-diagnostic fault codes.
4. Removable CFL/U-tube chute allows for any size of fluorescent lamps.
5. New 4-Stage Filter System
 - Upgraded cartridge filter catches any fine particles (1st stage).
 - Dual-action, replaceable HEPA filter removes particulates (2nd & 4th stage).
 - 3rd stage Activated Carbon filter captures and neutralizes mercury vapors released during the controlled crushing of lamps.
6. 55-gallon drum (sold separately) will hold approximately 1,350 4' T8 crushed lamps to reduce storage requirements and handling prior to recycling.



Online Bulb Eater® 3L Certified Training Program

This program includes a training video, quiz, and certificate of completion.

Request Quote Today!
1-888-888-7975



ETL Certified



The Bulb Eater® 3 with Intelli Technology® was named a "Money Saving Product for 2015" by Buildings Magazine and "New Product of the Year for 2015" by Environmental Protection.

Machine Benefits



Eliminate storage hassles - Reduce your needed storage space for lamps by crushing 1350 T8 4' lamps per 55-gallon drum.

Reduce handling - Handle your spent bulbs once. Simply roll your Bulb Eater[®] lamp crushing system on a 55-gallon drum dolly (sold separately) to the work area or into a storage area. Save roughly 20 hours of labor per 1000 lamps by crushing rather than boxing the lamps!



Safer work environment - EPA studies show an estimated 2-3% accidental breakage rate while boxing lamps prior to pick-up. The 0.001% emission rate from the Bulb Eater[®] lamp crushing system provides for less mercury vapor emission. Your workers are not only safer, but your liability is reduced!

Cut costs - By pre-crushing the lamps, facilities are able to save money on their lamp recycling costs. Savings are typically anywhere from a dime to \$1 per lamp!

Nationwide recycling program - Enjoy competitive rates for lamp recycling. Fully permitted trucks are used for transportation and Certificates of Recycling are provided once the lamps are recycled.

Bulb Eater[®] 3L Certified Training - online, 5-step program covering Bulb Eater[®] 3L assembly, operations, safety, and maintenance. This program includes a training video, quiz, and certificate of completion.

The Bulb Eater[®] 3L Specifications

FEED RATE	30 lamps per minute (Operator's speed may vary)		
CRUSHED LAMP CAPACITY <small>*Approximate; individual experience may vary</small>	1500	4' T5 Straight Lamps (0.625" diameter) per drum	
	1350	4' T8 Straight Lamps (1.0" diameter) per drum	
	875	4' T12 Straight Lamps (1.5" diameter) per drum	
	300	4' T17 Straight Lamps (2.0" diameter) per drum	
	400	8' T12 Straight Lamps (1.5" diameter) per drum	
	550	4' T12 U-tube Lamps (1.5" diameter) per drum	
	3,000	CFL's (Compact Fluorescent Lamps) per drum	
FILTRATION <small>¹ Air Sampling for Mercury Vapor and Particulates, As tested by Burea Veritas (N.A.) on September 8th, 2016. Results based upon crushing 2500 4' fluorescent lamps and changing the drums out twice in a warehouse and small office with normal ventilation.</small>	Exposure In Operator's Breathing Zone		¹ All air sample results collected during assessment were below the limits of analytical detection, and less than the OSHA PEL (0.1 mg/m ³) and ACGIH TLV (0.025 mg/m ³).
	Stage 1 	High Capacity Cartridge Filter (Approximate life: 4 drums)	1 micron @ 99% particle retention
	Stage 2 & 4 	H.E.P.A. Filter (Approximate life: 12 drums)	.3 micron @ 99.99% particle retention (Exceeds H.E.P.A. standard @ 99.97%)
	Stage 3 	Activated Carbon Filter (1500 hrs. running time)	Calculated life of approximately 1 million lamps
CONTROL PANEL		Control Panel with a Digital LCD Display with Intelli Technology[®]	LCD Display for indicating which mode the machine is in and any defaults that might occur. Additional measuring points that assist with machine diagnostics and maintenance/ filter change outs. Emergency stop button, start/stop button.
TOTAL FULL LOAD AMPS	8.5 amps @ 120 vac, 50-60 Hz, single phase; 4.25 amps @ 240 vac, 50-60 Hz, single phase		
VACUUM	Flow-through type vacuum motor, series wound, brush type, 5.42 amps, 120 vac, 650 w, 60 Hz, single phase		
ETL Certified	UL 73: Issued: 2011/03/02 Ed: 10 UL Standard for Safety for Motor-Operated Appliances CAN/CSA C22.2 No. 68: Issue: 2009/09/01 Ed: 7 Motor-Operated Appliances		
MOTOR	TENV Enclosure, 1/5 h.p. - 2 amp - 120vdc		

Model #'s ; Description
 333-100-120 ; 110v, BE 3L crushes straight, u-bend, & CFL lamps
 333-100-240 ; 220v, BE 3L crushes straight, u-bend, & CFL lamps

Call Today!
1-888-888-7975



Hazardous Waste Removal Services

Biohazardous and Industrial Waste Treatment and Disposal

Sybertech Waste Reduction Inc. has been assisting Western Canadian businesses with managing their industrial waste streams and hazardous waste for many years. Fortune 500 corporations, municipal, provincial, and federal government agencies, and small companies continue to rely on our turnkey waste management and disposal services. We assist clients in all aspects of hazardous waste management including:

- ◆ Corporate and facility wide on-site waste management system implementation and supervision
- ◆ In-house chemical analysis for waste identification and characterization
- ◆ Preparation of required documentation including waste profiles, manifests, and container labels
- ◆ Lab-packing, container cleanup and waste consolidation
- ◆ Waste removal and transportation
- ◆ Confined space entry and cleanup
- ◆ Waste disposal including recycling, fuel recovery, and incineration
- ◆ Supply of drums, overpacks, vermiculite, absorbents, etc. for waste packing and removal

These services can be provided for the following waste categories:

- ◆ Biohazardous waste
- ◆ Waste treatment and disposal - inorganic
- ◆ Waste treatment and disposal - organic
- ◆ Alternative fuel recycling
- ◆ Household hazardous waste
- ◆ Solvent recycling
- ◆ Compressed gas cylinders and aerosols



Zero Waste Boxes



Product #: CS45-S/M/L

Nitrile and Latex Gloves **Zero Waste Box**

TerraCycle has created a zero-waste solution for all your nitrile and latex. Use this box to recycle used nitrile and latex gloves.

Sizes available: S / M / L

Accepted waste:

Please send us your used nitrile and latex gloves.

Please do not include hair nets, ear plugs, and/or lab coats and garments.



Product #: CS58-S/M/L

Safety Equipment & Protective Gear Zero Waste Box

TerraCycle has created a zero-waste solution for all your safety equipment and protective gear. Use this box to recycle safety products.

Sizes available: S / M / L

Accepted waste:

Please send us your discarded nitrile and latex gloves, dust masks, garments, hairnets, beardnets, earplugs, and safety glasses.

Please do not include unwanted hazardous waste, medical waste, industrial waste, or tools.



Product #: CS25-S/M/L

Office Supplies Zero Waste Box

TerraCycle has created a zero-waste solution for all your office supplies. Use this box to recycle any non-electronic items used in your office.

Sizes available: S / M / L

Accepted waste:

Please send us your discarded, non-electronic office tools such as tape desk organizers, card and document filers, binders, calendars, labels, staplers, writing instruments, hole punchers, dividers, paper cutters, and correction supplies. As well as fasteners including paper clips, staples, and binder clips, and discarded backing from sticker and label sheets.

Please do not include office e-waste, like telephones, electronic staplers and label making machines. We will also not accept household hazardous waste such as lithium ion batteries, pressurized canisters, pesticides, paint or medical sharps.



Product #: RS6-S/M/L

Break Room Separation Zero Waste Box

TerraCycle has created a zero-waste solution for break room waste. Use this box to recycle any items used in the break room including plastic packaging, coffee capsules and disposable cutlery.

Sizes available: S / M / L

Accepted waste:

Please send us your coffee capsules, dining disposables, coffee and tea accessories, plastic packaging and aminated paper packaging.

Please do not include unwanted coffee makers, appliances, or hardware. We will also not accept household hazardous waste such as lithium batteries, pressurized canisters, pesticides, paint or medical sharps.



Product #: CS8-S/M/L

Coffee Capsules Zero Waste Box

TerraCycle has created a zero-waste solution for all your coffee capsules. Use this box to recycle any pre-packaged beverage capsules used in capsule specific machines to make hot beverages.

Sizes available: S / M / L

Accepted waste:

Please send us all varieties of used coffee or tea discs from any capsule-specific coffee or tea machine.

Please do not include used tea or coffee filters, loose coffee grounds, electronics (coffee makers) or any other coffee or tea accessory. Please note that we will not accept organics, broken glass, bio-medical waste, soiled diapers, expired medication, pesticides, paint, pressurized canisters, and medical sharps in any of our boxes. Please send traditional recyclables through your municipal system.



SYBERTECH

Waste Reduction Ltd.

Sybertech is committed to bringing new and innovative products, services and solutions to our customers.

We aim to provide operational cost-saving services and products that help keep the environment cleaner and the work place safer.

Thank you for considering our products



Sybertech Waste Reduction Ltd.
PO Box 3009 - 33191 First Ave.,
Mission, British Columbia, Canada
V2V 1G0

Toll Free Phone: 1-888-888-7975 | sales@swrl.com | www.swrl.com



SYBERTECH
Waste Reduction Ltd.

Toll Free Phone: 1-888-888-7975 | sales@swrl.com | www.swrl.com